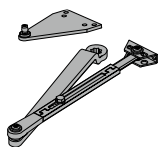
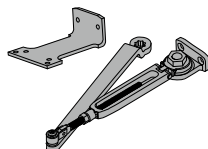


## Arm types All SC80A Series closers come with slim cover, standard arm and screw pack.



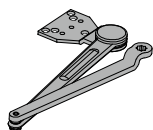
### Regular arm, SC80A-3077PA

Non-handed arm with adjustable forearm assembly to accommodate a range of doors and frame reveal conditions. Mounts hinge side, top jamb or parallel arm. PA shoe included to allow installation in a parallel arm configuration.



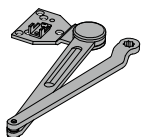
### Hold-open regular arm, SC80A-3049PA

Optional, non-handed, hold open arm with adjustable forearm assembly to accommodate a range of doors and frame reveal conditions. Mounts hinge side, top jamb or parallel arm. PA shoe included to allow installation in a parallel arm configuration.



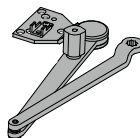
### Heavy duty arm, SC80A-3077HD

Optional, non-handed, stamped, heavy duty, parallel arm for use in high-traffic applications.



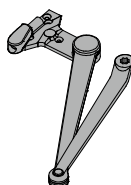
### Dead stop arm, SC80A-3077DS

Optional, non-handed, stamped, heavy duty, parallel arm includes a positive mechanical stop and non-adjustable forearm assembly for high volume traffic or potentially abusive installation conditions.



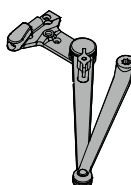
### Dead stop hold-open Arm, SC80A-3049DS

Optional, non-handed, stamped, heavy duty, hold-open parallel arm includes a positive mechanical stop and non-adjustable forearm assembly for high volume traffic or potentially abusive installation conditions. Also includes a manually selective hold-open function.



### Spring-n-stop arm, SC80A-3077SS

Optional, non-handed, extra heavy-duty, forged parallel arm includes an integral spring stop and non-adjustable forearm assembly for high volume traffic or potentially abusive installation conditions.



### Spring-n-stop hold-open arm, SC80A-3049SS

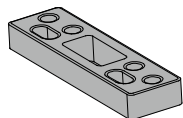
Optional, non-handed, extra heavy-duty, forged parallel arm includes an integral spring stop and non-adjustable forearm assembly for high volume traffic or potentially abusive installation conditions. Also includes a manually selective hold-open function.

## Installation accessories



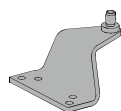
### Soffit shoe support, SC80A-30

Provides anchorage for fifth screw used with soffit shoe, where reveal is less than 3 1/16" (78mm).



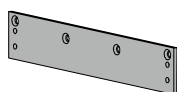
### Blade stop spacer, SC80A-61

Required to lower parallel arm shoe to clear 1/2" (13mm) blade stop.



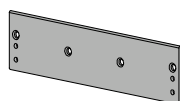
### Auxiliary shoe, SC80A-62A

Requires a top rail of 7" (178mm). Optional shoe replaces PA shoe for parallel arm mounting of regular arm with overhead holder/stop.



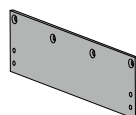
### Plate, SC80A-18

Required for top jamb mounting where head frame is less than 1 3/4" (44mm) or flush ceiling conditions exists.



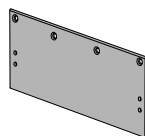
### Plate, SC80A-18FC

Required for top jamb mounting where head frame is less than 1 3/4" (44mm) or flush ceiling conditions exist. To be used with a full cover SC80A-72FC.



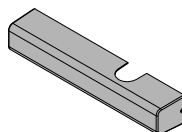
### Plate, SC80A-18PA

Required for parallel arm mounting where top rail is less than 4 3/8" (111mm), measured from the stop. Plate requires 1 7/8" (48mm) minimum top rail measured from stop.



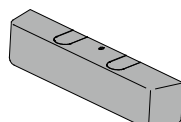
### Plate, SC80A-18PAFC

Required for parallel arm mounting where top rail is less than 4 3/8" (111mm), measured from the stop. Plate requires 1 7/8" (48mm) minimum top rail measured from stop. To be used with a full cover SC80A-72FC.



### Cover, SC80A-72

Standard, non-handed, slim line plastic cover encloses the closer body with a cap on the unused pinion shaft.



### Cover, SC80A-72FC

Optional non-handed, full plastic cover encloses the closer body.