

### Cylinder



**4111(6)T-3071**  
Cast Iron Cylinder Assembly

- Handed
- Standard

### Covers



**4110T-72**  
Plastic Cover

- Non-handed
- Standard



**4110T-72MC**  
Metal Cover

- Handed
- Required for plated finishes and custom powder coat finishes
- Optional

### Arm



**4110T-3077T**  
Standard

- Handed
- Roller not included with arm

### Tracks



**4110T-3038**  
Standard Track

- Non-handed
- Non hold-open
- Will accept hold-open clip and/or bumper assembly
- Standard



**4110T-3038B**  
Standard Track with Bumper

- Non-handed
- Non hold-open
- With bumper assembly installed
- Will accept hold-open clip
- Optional



**4110T-3038H**  
Hold-Open Track

- Non-handed
- With hold-open clip installed
- Will accept bumper assembly
- Optional



**4110T-3038HB**  
Hold-Open Track with Bumper

- Non-handed
- With hold-open clip and bumper assembly installed
- Optional

### Installation Accessories



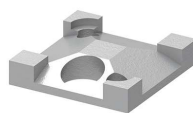
**4110T-18**  
Plate

- Required where top rail, when measured from the stop, is less than 5-1/4" (133 mm)
- Requires minimum 2-1/4" (57 mm) minimum top rail



**4110T-169**  
Track Bumper

- Mounts in track to assist backcheck, not replace auxiliary stop
- Limits maximum opening. Consists of bumper, bumper post, and mounting screw



**4110T-3054**  
Hold-Open Clip

- Mounts in track to provide hold-open function
- Hold-open point controlled by clip location
- Consists of clip and mounting screws
- Requires 4110T-3034H Track Roller



**4110T-3034**  
Track Roller

- Quiet, low friction roller assembly
- Shoulder dimension "X" = 1/16" (2 mm)



**4110T-3034H**  
Track Roller

- Quiet, low friction roller assembly
- Shoulder dimension "X" = 1/16" (2mm)
- Spring-loaded hold-open mechanism