

Motor Gearbox



**9530-3454
Motor Gearbox**

- Senior swing
- Handed
- Driving mechanism for operator
- Provides maximum 15 lbs opening force

Mount Brackets



**9530-275
Mounting Bracket**

- Motor gearbox mounting bracket for 2-3/4" offset pivot or butt hinge installations
- Front bracket



**9530-3018
Rear Mounting Bracket**

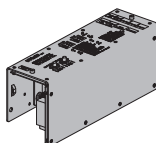
- Motor gearbox mounting bracket
- Rear bracket



**9530-334-1
Angled Bracket**

- Mounting bracket for surface applications (includes 2 mounting brackets)

Control Box



**9530-3462
Control Box**

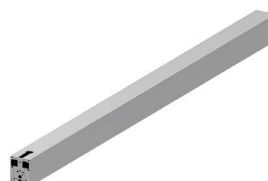
- Electronic controlling device for Senior Swing

Headers



**9530-3572HL
Header**

- Standard
- Single door, single operator
- Specify length 33" to 48" maximum



**9530-3572DD
Header**

- Standard
- Double door, single operator
- Specify length 49" to 98" maximum

End Caps



**9530-334
Header End Caps**

- With openings for wiring



**9530-334-2
End Dress Plate**

- Metal finish end cap

9530 Series Senior Swing

Accessories

Arms



9530-3077PLCM
Standard Arm Assembly

- Handed
- Track roller included (includes 3038, 3077T, 3034 & 73)



9530-3077T
Standard Arm

- Handed
- Track roller not included

Tracks



9530-3038
Track

- Non-handed
- Includes 3034 & 73



9530-73
Track End Cap

- Black plastic end caps



9530-3034
Roller

- Quiet low friction roller assembly

Installation Assembly



9530-11A
Spindle Plate

- Hides bottom of motor gearbox
- Completes header box
- Cutout allows for motor gearbox shaft
- For 2-3/4" offset pivot or butt hinge installations



9530-12
Filler

- Plate blank
- Completes length of header box (specify Length)



9530-18
Mounting Plate

- Optional mounting plate for standard hollow metal door frames
- Specify length 36-1/2" to 101-1/2" maximum, when angle brackets
- Specify length 33" to 98" maximum when using end dress plates

NOTE: The length of a universal 18 plate will need to be ordered 3-1/2" longer than the supplied header when using angle brackets