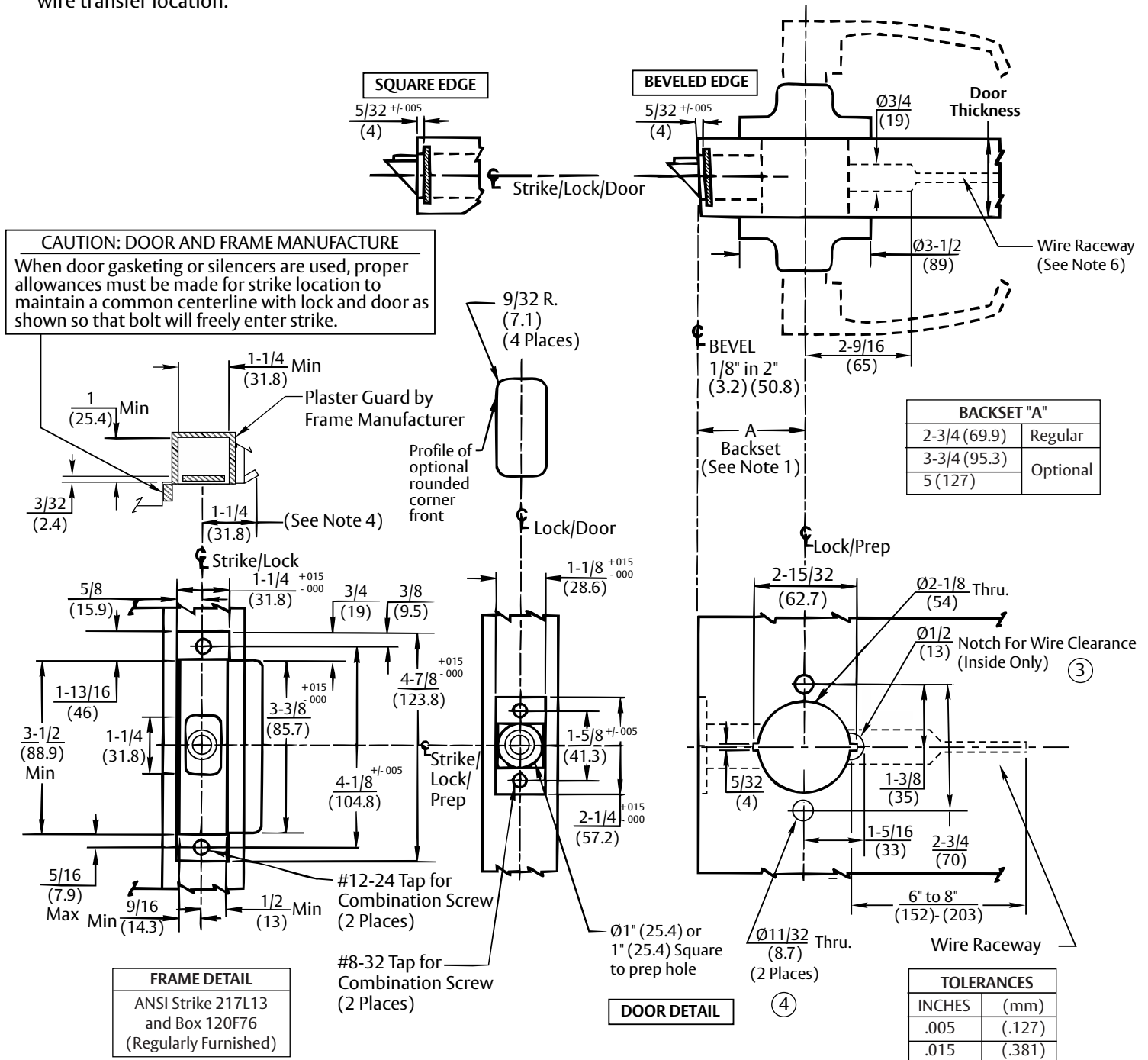


# Notes:

1. Backset is measured from centerline of bevel which is centerpoint of door thickness.
2. Door prep with 2-3/4" (69.9) backset meets ANSI standards A156.115 for steel and wood doors plus through bolt holes shown.
3. Dimensions given in inches and (mm).
4. 1-1/4" strike lip suits frame for 1-3/4" thick door. Lip will vary for other door thicknesses.
5. Door prep will vary for 3/4" (19) latch assembly. Refer to template T30528 for details.
6. Door manufacturer to provide Ø3/8" (9.5) wire raceway from lock prep to hinge edge wire transfer location.



## RESPONSIBILITY

DOOR AND FRAME MANUFACTURERS ARE RESPONSIBLE FOR PROVIDING ADEQUATE CONSTRUCTION OR REINFORCEMENTS FOR PROPER INSTALLATION OF HARDWARE SHOWN. ALL ARCHITECTURAL BUILDERS HARDWARE MUST BE INSTALLED ON PROPERLY REINFORCED DOORS AND FRAMES, REGARDLESS OF TYPE, MATERIAL, OR METHOD OF CONSTRUCTION.

## CLX3300 & CL3300 Series Electrified Lever Lockset

**Corbin  
Russwin**

**ASSA ABLOY**

www.corbinrusswin.com

SUPERSEDES	T30971-3	DO NOT SCALE DRAWING
TEMPLATE NUMBER	T30971-4	SHEET 1 of 1
		DATE 12/22

Experience a safer and more open world

Copyright © 2018, 2022, ASSA ABLOY Access and Egress Hardware Group, Inc. All rights reserved. Reproduction in whole or in part without the express written permission of ASSA ABLOY Access and Egress Hardware Group, Inc. is prohibited.