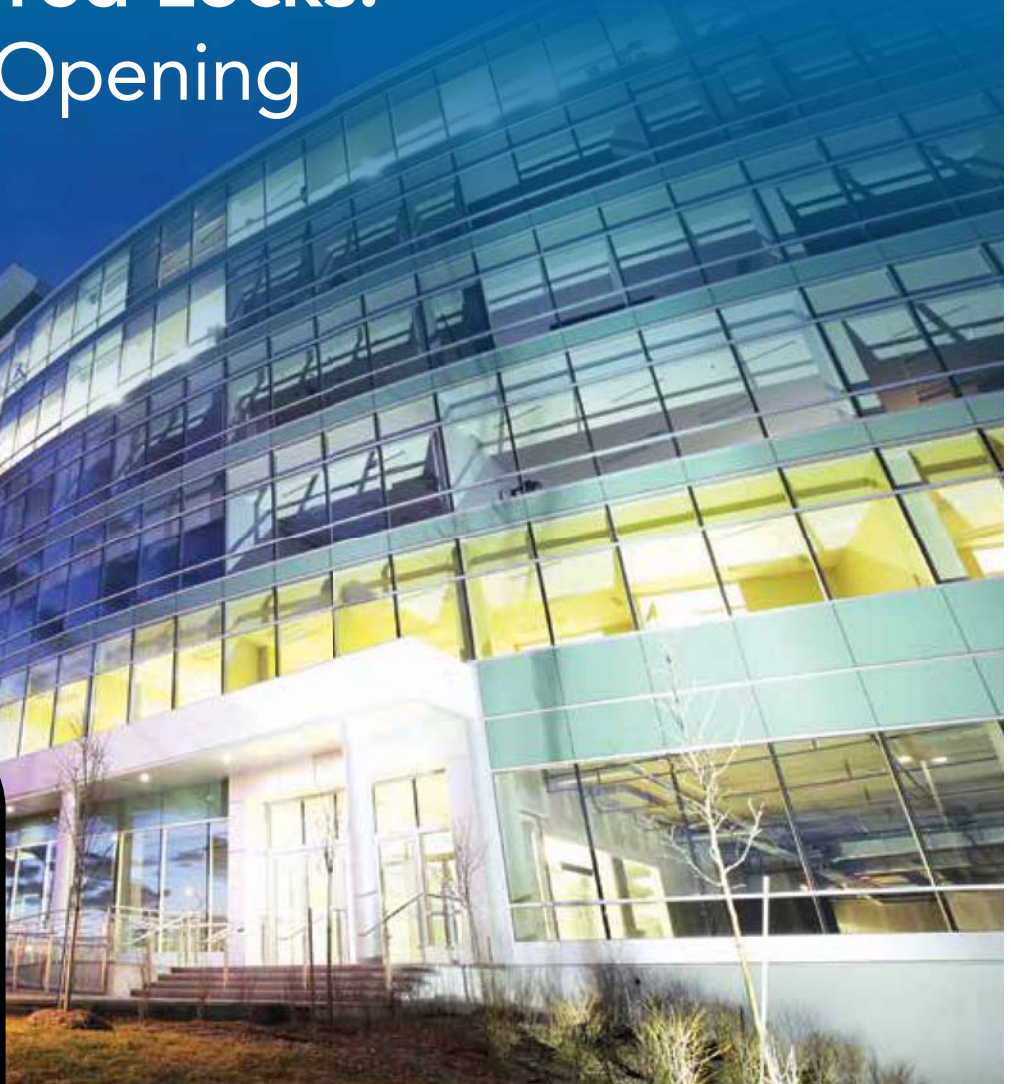


**SARGENT**

**ASSA ABLOY**

# SARGENT Bored Locks: Secure Every Opening



ASSA ABLOY, the global leader  
in door opening solutions

# Versatile Locking Solutions for Any Environment

Facilities with varying security needs can be a challenge to secure. One size never fits all when it comes to safety and security; you need options. SARGENT bored locks offer the choices you need to provide the right level of security at each door opening. And these locks never compromise on durability, strength, or style.



## 11 Line

This lock sets a higher standard for ANSI/BHMA Grade 1 bored-in locks with our unique T-Zone® construction. Designed for the highest traffic areas at a facility, the 11 Line provides unequalled strength and durability.



## 10 Line

Your 'go-to' option, this cylindrical lock exceeds ANSI/BHMA Grade 1 standards and offers a multitude of functions to handle any application.



## 7 Line

The 7 Line is designed for interior and exterior standard-duty Grade 2 applications.





# 11 Line

## Bored Locks



### BENEFITS

- **Durable and Reliable:** Independently-verified cycle testing proves the 11 Line will last the lifetime of the facility
- **Flexible:** Integrates with numerous key systems and utilizes one lockbody for multiple functions, simplifying facility maintenance
- **Lower Cost of Ownership:** Fewer inventoried parts combined with a high number of opening cycles results in less time and frequency for maintenance and reduced overall expenses
- **Safe and Secure:** Torque resistant construction provides ability to withstand tough environments to keep occupants and property safe and secure
- **Sustainable:** Contributes to your sustainability efforts - fewer lock replacements due to long life and high post-consumer recycled content

### FEATURES

- 18 functions available, including Classroom Security; many functions are field changeable requiring no additional parts
- Integrates into most existing facility's key systems – accepts SARGENT key systems including patented Degree® and Signature; also accepts Best® SFIC and Schlage® and Medeco® LFIC
- Retrofits any standard cylindrical lock doorprep and is non handed
- Simple cylinder removal provides easy change outs
- Made from 68% post-consumer recycled content as per LEED MR credit 4
- Available in 13 architectural grade finishes and Microshield® antimicrobial coating
- 10 year limited warranty

### DURABILITY AND CYCLE TESTING

- Withstands more than **TWO TIMES** ANSI/ BHMA A156.2 Grade 1 torque force on a locked lever
- T-Zone lock technology tested to **15 times** the standard in ANSI/BHMA A156.2 Grade 1 cycle testing
- **15 MILLION** cycles equals over 55 years of opening life in many facilities!

### TYPICAL APPLICATIONS

- High traffic doors
- Areas subject to severe abuse
- Schools, hospitals, other public buildings
- Retrofit applications



# 10 Line

## Bored Locks



### BENEFITS

- **Strength & Durability:** Exceeds ANSI/BHMA Grade 1 requirements for cycle and torque resistance
- **Safety & Security:** Specialized functions allow for quick and secure lockdowns
- **Flexibility:** Accommodates retrofit applications and a variety of door preparations
- **Efficient Installation:** Pre-assembled components makes for quick, easy installation

### FEATURES

- 21 different functions, including classroom security and electromechanical options
- Freewheeling and vandal resistant trim optional
- 7 year limited warranty
- 11 architectural grade finishes to match any décor with or without MicroShield® antimicrobial coating

### TYPICAL APPLICATIONS

- Offices
- Schools / Universities
- Hospitals
- Manufacturing Facilities



# 7 Line

## Bored Locks



### BENEFITS

- **Reliable:** Exceeds ANSI/BHMA A156.2 Grade 2 cycle requirements
- **Flexible:** Ideal for many applications with 10 functions; fits modified 161 door preps

### FEATURES

- 10 standard functions with special functions available
- Conveniently installs in one minute or less; user-friendly packaging and instructions
- Multiple security key systems available (Signature, XC, Keso and Keso F1)
- Internal through-bolts supply strength and stability without requiring additional door preparation
- 5 year limited warranty; no service required
- 11 architectural grade finishes and Microshield® antimicrobial coating



### TYPICAL APPLICATIONS

- Medical Clinics
- Offices
- Public Buildings
- Hotels / Motels
- Government Facilities



# Where To Use SARGENT Locks

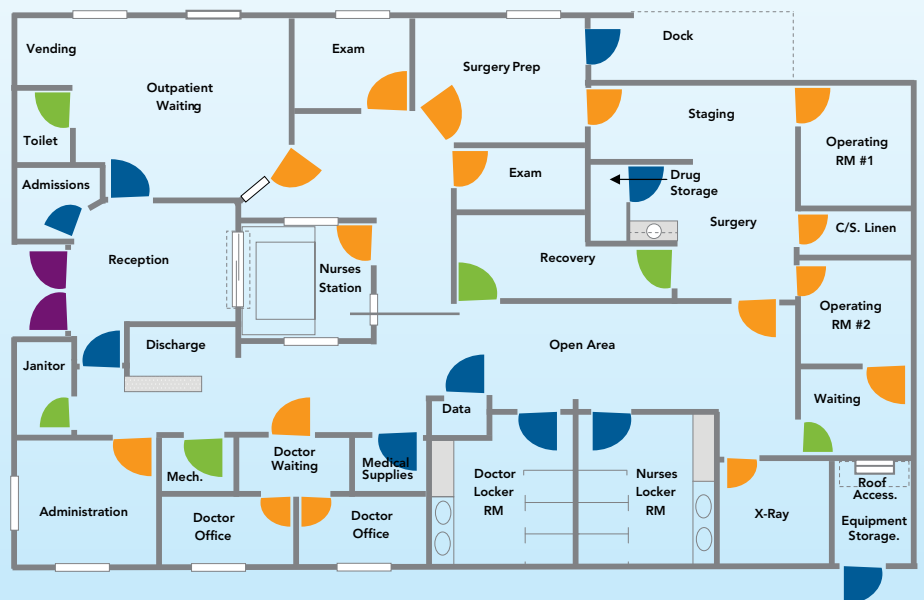
## OFFICE / WAREHOUSE EXAMPLE

-  11 Line
-  10 Line
-  7 Line
-  Exit Device



## MEDICAL OFFICE BUILDING EXAMPLE

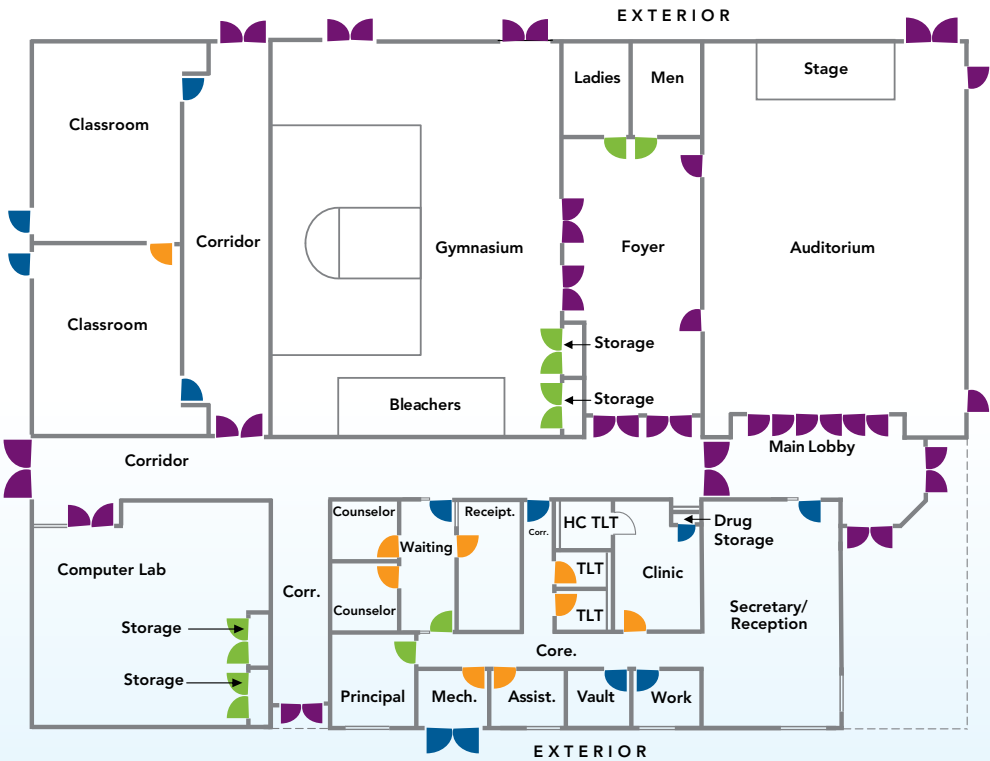
-  11 Line
-  10 Line
-  7 Line
-  Exit Device



Using a combination of the **11, 10, and 7 lines of locks**, each opening can have the right level of strength, durability to last, and flexibility. The floor plans below show how the combination of these locks secure the diverse openings in any type of facility.

SCHOOL  
EXAMPLE

- 11 Line
- 10 Line
- 7 Line
- Exit Device



For additional information, contact your  
ASSA ABLOY Door Security Solutions  
sales consultant, call SARGENT at  
800-727-5477, or visit [www.sargentlock.com](http://www.sargentlock.com)

**SARGENT**  
**ASSA ABLOY**

ASSA ABLOY is the global leader in door opening solutions, dedicated to satisfying end-user needs for security, safety and convenience.

**SARGENT Manufacturing Company**  
**For more information call 800-727-5477**  
**or visit us online at [www.sargentlock.com](http://www.sargentlock.com)**

Copyright © 2015 Sargent Manufacturing Company, an ASSA ABLOY Group company. All rights reserved. Reproduction in whole or in part without the express written permission of Sargent Manufacturing Company is prohibited.



**MicroShield®**

As part of their promise to provide innovative solutions to their customers, certain ASSA ABLOY Group brands offer the MicroShield® technology, registered with the EPA and FDA. MicroShield® is a silver-based antimicrobial coating designed to inhibit the growth of bacteria. MicroShield® is a registered trademark of Yale Security Inc., an ASSA ABLOY Group company.