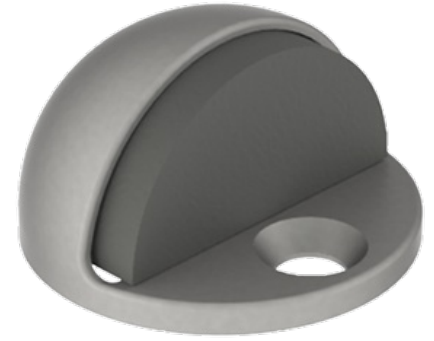


241F

Light Duty Dome Stop - Low

Notes:

- To be used independently or in conjunction with 246B
- BL241F is 241F case quantity 50
- For use when no threshold is used (door not undercut)
- For use with wood or concrete floors



PRODUCT SPECIFICATIONS

CERTIFICATION:

- Meets ANSI A156.16 from L02141 - L02142

DIAMETER:

- 1-11/16" (43 mm)

BASE THICKNESS:

- 1/8" (3 mm)

OVERALL HEIGHT:

- 1" (25 mm)

MATERIAL:

- Cast brass with grey rubber bumper

FINISHES:

- US3, US4, US5, US9, US10, US10B, US15, US15A, US19, US26, US26D

FASTENERS:

- One (1) #14 x 1-1/2" FPHWS, one (1) 1/4-20 x 3/4" FPHMS, one (1) 1/4-20 lead anchor, and one (1) plastic anchor