

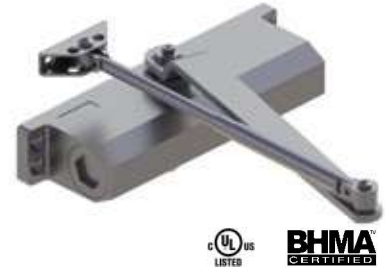
5400 SERIES - GRADE 2 STANDARD DUTY SURFACE DOOR CLOSER

WARRANTY

Five-year warranty - maximum 200 lb. door weight

FEATURES

- Ideal for light duty commercial applications
- Standard package contains 5401 closer body, 5901 pinion cap, 5403 main arm assembly, 5404 standard screw pack, 5900 parallel arm bracket, and 5902 SNB screw pack for 1-3/4" (44 mm) door



Certification:

- BHMA Certified ANSI A156.4, adjustable sizes 2-5
- UL/cUL Listed for up to 3 hours
- UL10C Positive Pressure Rated
- UL10B Neutral Pressure Rated

Covers:

No Cover - Standard

Closer Body:

- Aluminum alloy
- The recommended temperature for prolonged use is between -40° F (-42° C) & 150° F (66° C)

Springs:

Double heat treated steel, tempered springs

Valves:

- Adjustable latching and sweep speed valves
- Adjustable backcheck valve - Optional
- Staked valves - Standard

Handing:

Non-handed

Arms & Brackets:

Tri-Pack: Regular, Parallel Arm, and Top Jamb Mount - Standard
15% power adjustment in standard arm for regular and top jamb mount

SPECIFICATIONS

Door Thickness:

1-3/4" (44 mm) - Standard
1-3/8" - 2-1/4" (36 mm - 57 mm) thick door - Optional

Fasteners:

Self-reaming, self-tapping wood and machine screws
Sex nuts and bolts

Notes:

Precision machined, heat treated steel piston
Triple heat treated steel spindle
Special templates available upon request by contacting Hager Companies Customer Service

FINISHES

ALM, BLK*, BRZ*, DBZ*, GOL*
Rust inhibiting primer - Standard

* Extended lead times and MOQs apply.

