

Norton®

ASSA ABLOY

CAUTION

An incorrectly installed or improperly adjusted door closer can cause property damage or personal injury. These instructions should be followed to avoid the possibility of misapplication or misadjustment.

Power Track® Series Primary Unit – PTDO (with detector) Support Unit - PTO (without detector)

Models

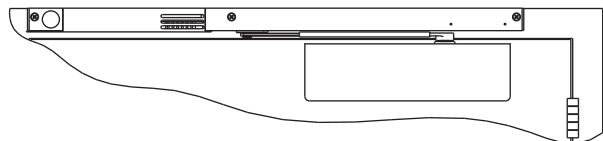
Hinge (Pull) Side of Door Application Stop (Push) Side of Door Application

7705PTDO P7705PTDO
7705PTO P7705PTO

Installation Instructions

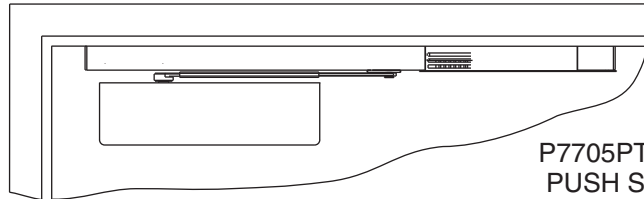
Combination Door Closer-Holder and Releasing Device WITH and WITHOUT Integral Smoke Detector

NOTES: - For wiring of PTDO models, see "PowerTrack®" "Wiring Instructions" No. 80-9342-0902-021
- When used with a PTDO model, PTO unit must be a 24V unit



7705PTDO
PULL SIDE
illustrated

LH – Left Hand Door
RHR – Right Hand Reverse



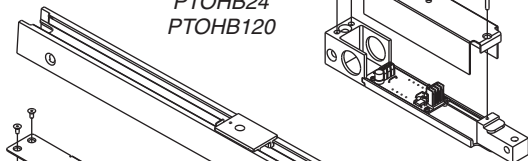
P7705PTDO
PUSH SIDE
illustrated

LH – Left Hand Door
RHR – Right Hand Reverse

PTO UNITS NOT SHOWN

Components:

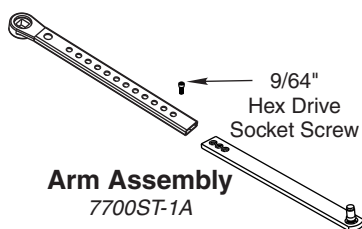
PTO Hook-Up Box
PTOHB24
PTOHB120



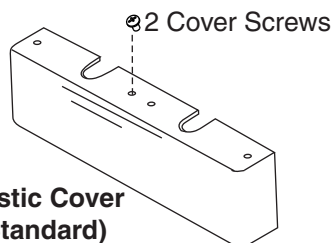
PTO Track
PTO24
PTO120

Smoke Detector
PTDO Hook-Up Box
PTDOHB24
PTDOHB120

Pull (Hinge) Side



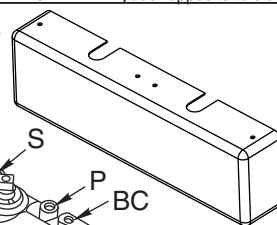
Arm Assembly
7700ST-1A



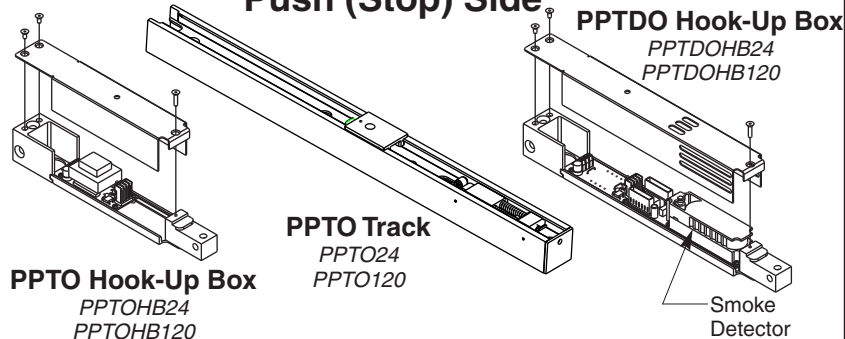
Plastic Cover
(Standard)
7700P

Preparation for Fasteners			
Fasteners		Door or Frame	Drill-Sizes
Standard	Self-Drilling Screw	Aluminum or Metal	No drill required
		Wood	3/16" (4.30 mm) Pilot hole required
Optional	Sleeve nuts and bolts	Metal	Drill: #7 (0.201" dia.) Tap: 1/4" - 20
		Hollow Metal	9/32" (7 mm) through; 3/8" (9.5 mm) door face opposite to closer
	Through-bolts and grommet-nuts	Aluminum or Wood	3/8" (9.5 mm) through
		All	9/32" (7 mm); 3/8" (9.5 mm) dia. x 3/8" (9.5 mm) deep on door opposite to closer

Metal Cover
with Clips
7700M *



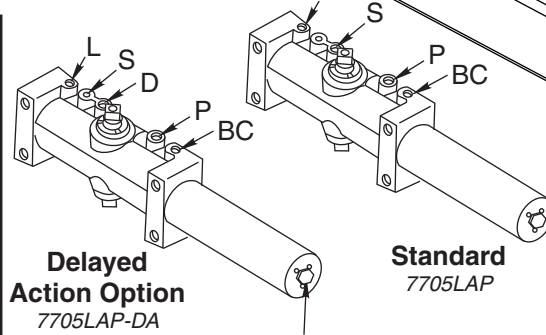
Push (Stop) Side



PPTDO Hook-Up Box
PPTDOHB24
PPTDOHB120

PPTO Track
PPTO24
PPTO120

Smoke Detector
PPTO Hook-Up Box
PPTOHB24
PPTOHB120



Delayed
Action Option
7705LAP-DA

Standard
7705LAP

Power Adjustment Nut

* This cover is only available for PULL SIDE applications.

NOTE:

- For special applications a separate door and frame preparation template is packed with these instructions.
- Use this instruction sheet for installation sequence and closer adjustments only.

- Use of an auxiliary door stop is always recommended.
- Unit must be mounted on interior of building in dry environment, maximum humidity of 95%.
- See NFPA70 for wiring requirements and NFPA72 for alarm system requirements.

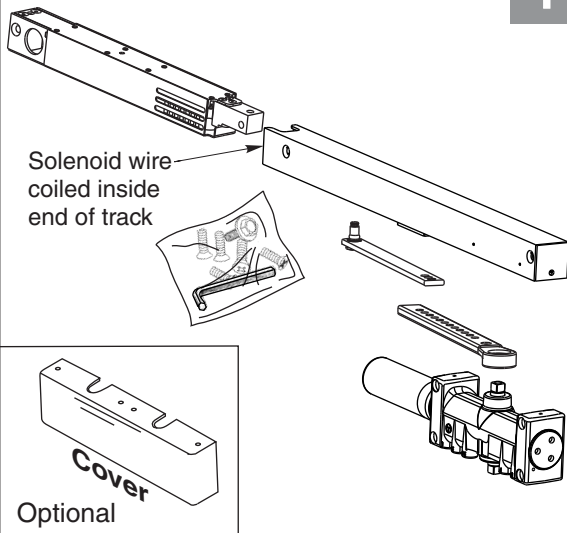
7705PTO/7705PTDO Series

Hinge (Pull) Side Application

Norton®

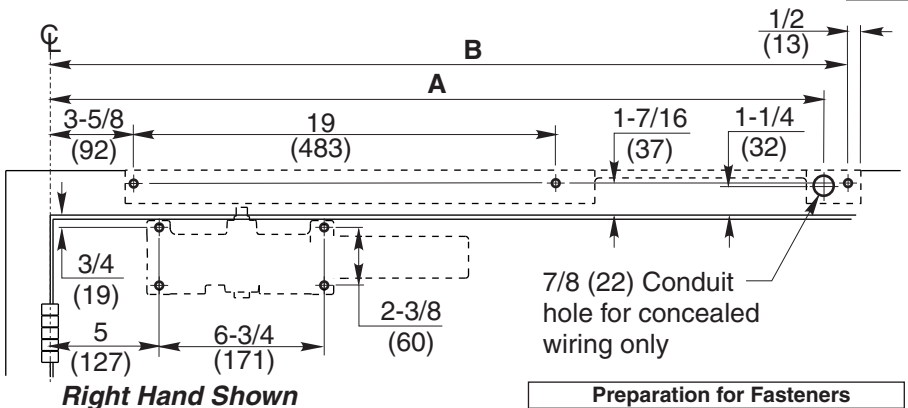
ASSA ABLOY

Parts



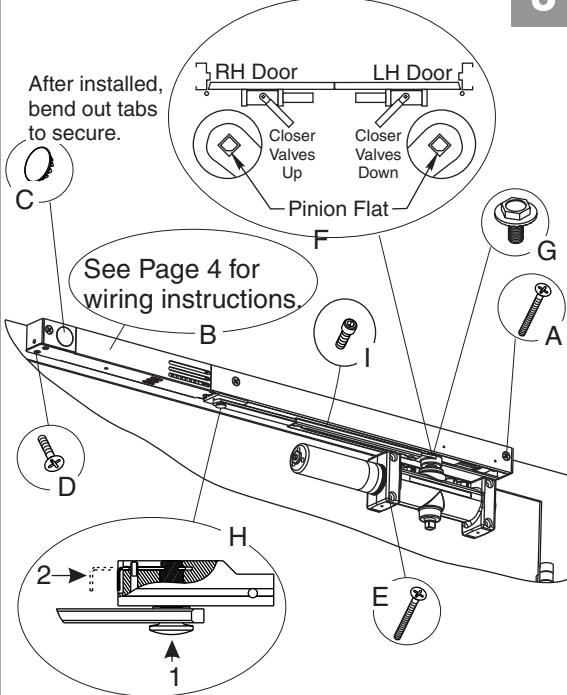
1

Mark and Drill Holes



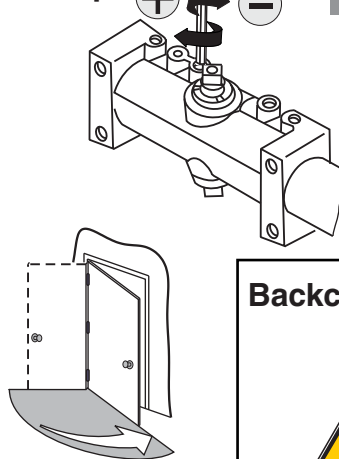
2

Installation Sequence



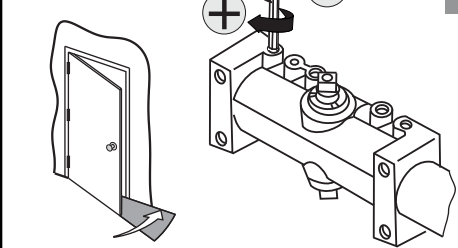
3

Sweep



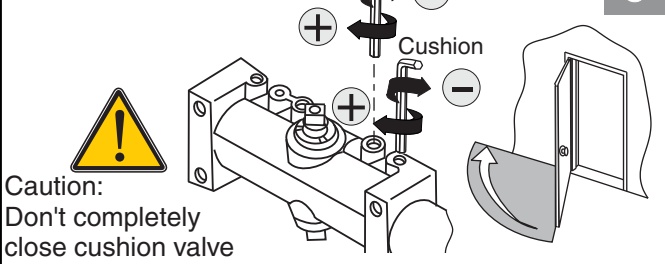
4

Latch



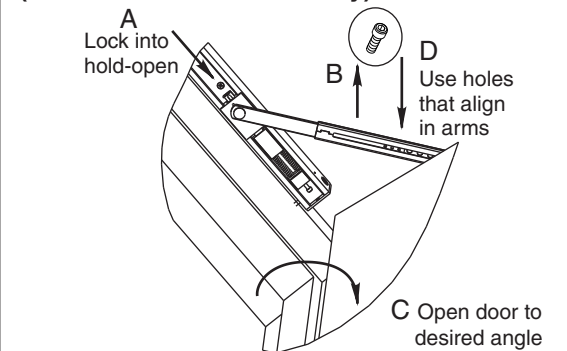
5

Backcheck



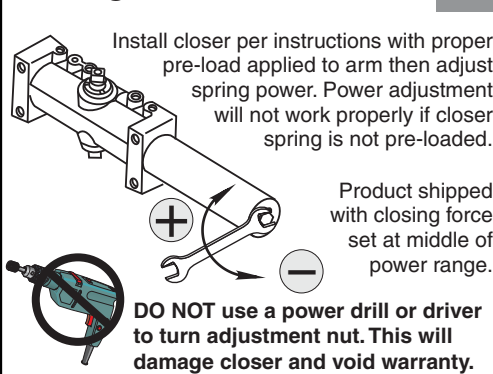
6

Hold Open Angle (Between 85° and 110° only)



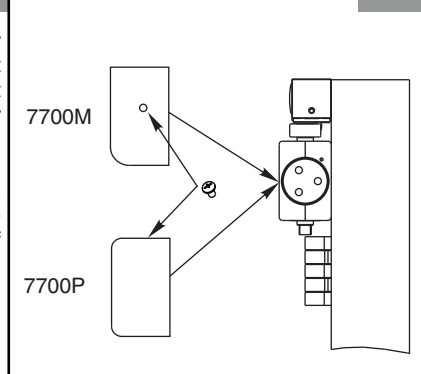
7

Closing Force



8

Optional Cover



9

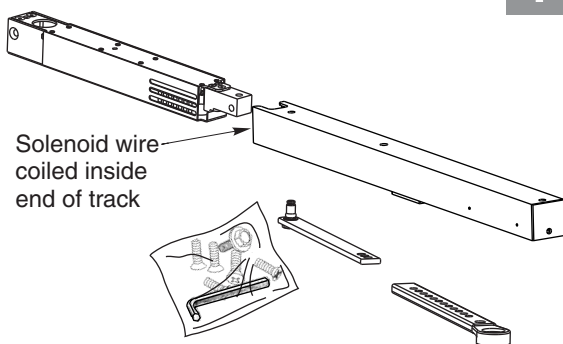
P7705PTO/P7705PTDO Series

Stop (Push) Side Application

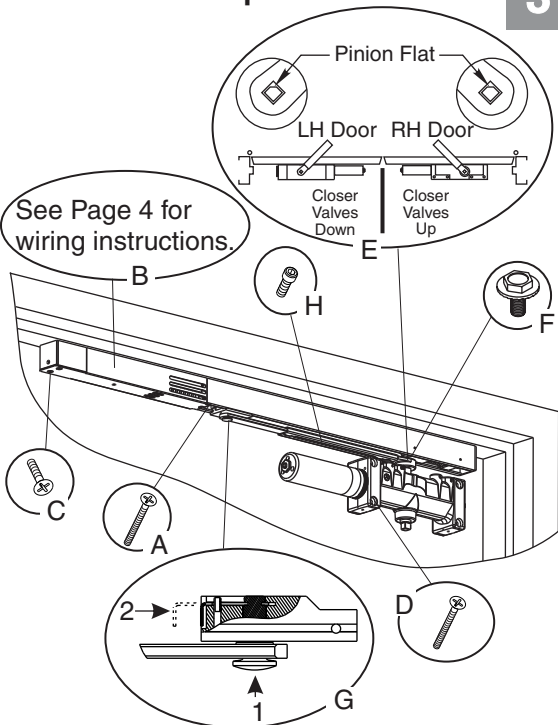
Norton®

ASSA ABLOY

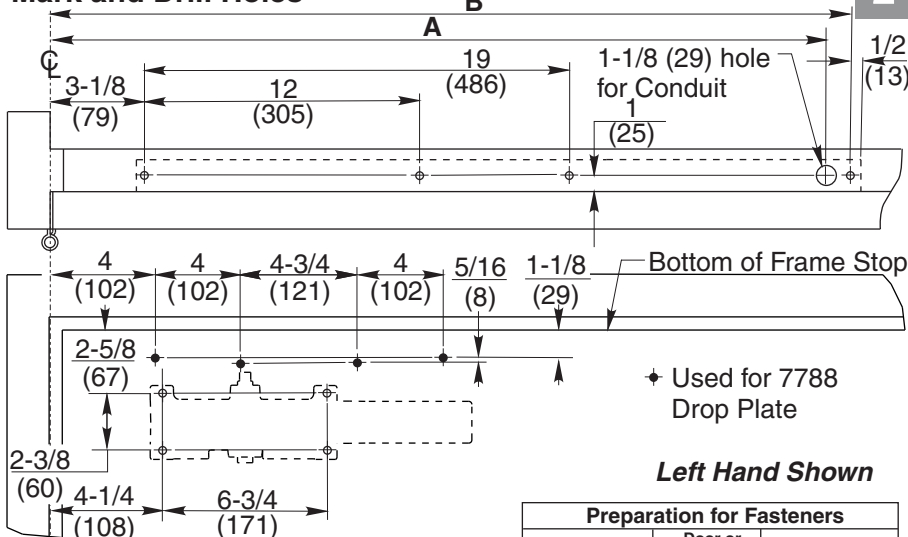
Parts



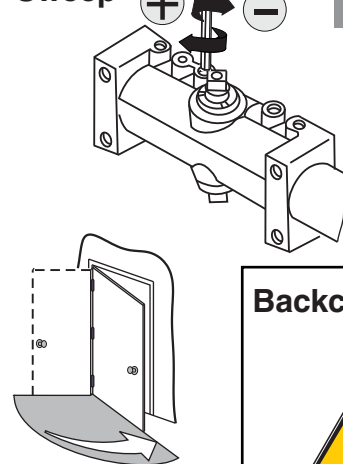
Installation Sequence



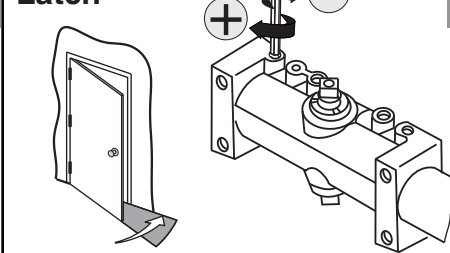
Mark and Drill Holes



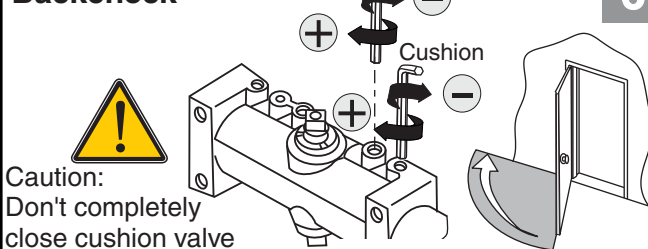
Sweep



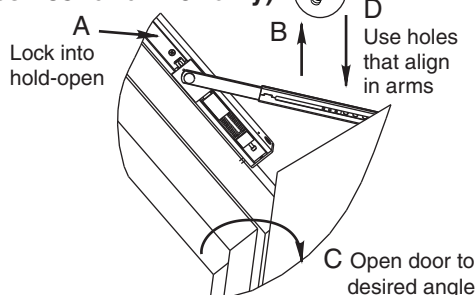
Latch



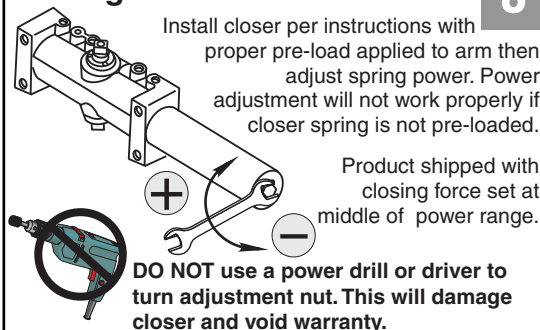
Backcheck



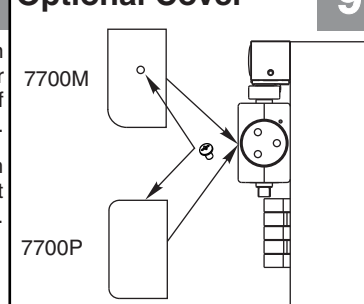
Hold Open Angle (Between 85° and 110° only)



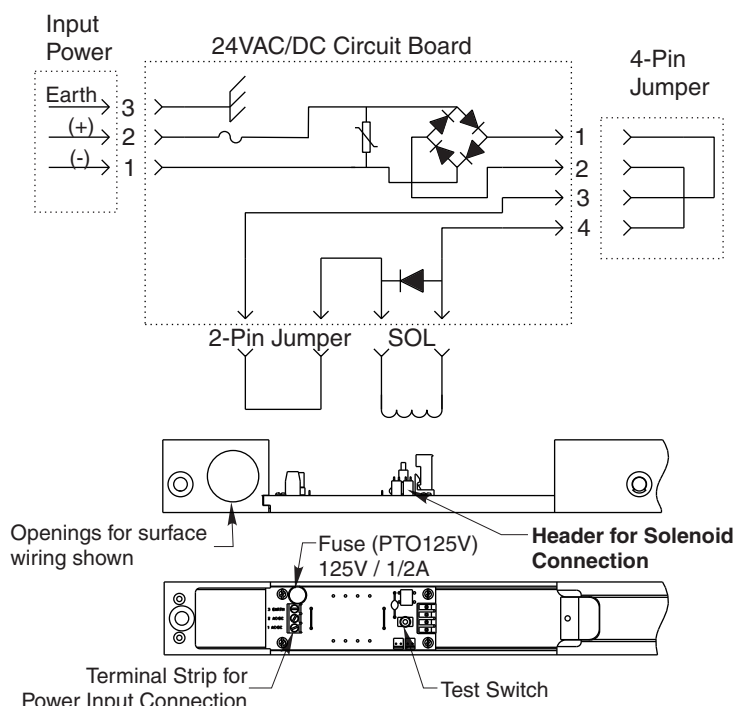
Closing Force



Optional Cover

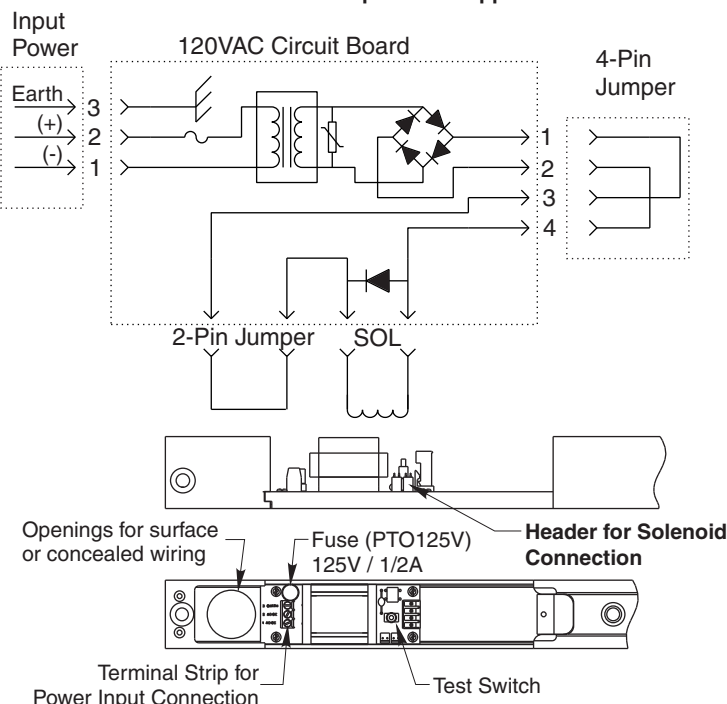


PTO Support Unit Wiring Diagram (24VAC/DC Input)



PTO Support Unit Wiring Diagram (120VAC Input)

Do not use a 120VAC PTO unit when power is supplied from a PTDO unit



For PTDO Models:

Refer to Wiring Instructions
No. 80-9372-0904-000 (08-20)
for making wiring connections.

ELECTRICAL DATA

	120VAC	24VAC	24VDC	Detector
Voltage	120V 132V Max 102V Min	24V 26.4V Max 20.4V Min	24V 26.4V Max 20.4V Min	24V 26.4V Max 20.4V Min
Current	.036 Amps	.059 Amps	.074 Amps	0.034 Amps

NOTES:

- Maximum wire size is 14AWG.
- All wiring and connections use standard wiring practice conforming with local wiring codes.

IMPORTANT:

Remove solenoid wire from end of track before installing track to frame. Do not pinch or crimp wire. Once track and hook-up box are installed, solenoid wire must be plugged into Header on circuit board shown above.

After making all wiring connections:

- Turn power to unit "ON". (On Primary (PTDO) unit only, red LED should illuminate once every 15 sec.).
- Track's hold open force is preset at the factory.
- Open door to hold-open position. Manually pull door out of hold-open and release...door should close. If arm does not release from hold-open, increase the releasing force by turning the screw accessible thru the end cap of the track using the 9/64" hex wrench provided.

- Again, open door to the hold-open position. Depress "Test Switch" button on the hook-up board (accessible through cover)...door should close. If arm does not release, see previous step.

Installation of Cover:

- **Plastic Cover (7700P):** Slide cover insert into the un-used cutout in cover. Install cover using screws provided.
- **Metal Cover (7700M):** Fasten cover to mounting clips with screws provided.

Norton Technical Product Support:
Monroe, NC 28112 USA
Phone: 800.438.1951 ext: 6030
TechSupport.Norton@assaabloy.com
nortondoortcontrols.com

Norton is a brand associated with ASSA ABLOY Accessories and Door Controls Group, Inc., an ASSA ABLOY Group company.
Copyright © 2009, 2014, 2020, ASSA ABLOY Accessories and Door Controls Group, Inc. All rights reserved. Reproduction in whole or in part without the express written permission of ASSA ABLOY Accessories and Door Controls Group, Inc. is prohibited.

Approved 2020-09-16

Experience a safer
and more open world
80-9377-0716-020 (08-20)