

HES[®] 8300 Electric Strike

ASSA ABLOY

The global leader in
door opening solutions



The fire-rated, concealed electric strike solution for cylindrical locksets.

Saves Time

- No cutting into the face of the frame
- Maintains the guidelines for retrofit into fire-rated frames
- Accommodates door sag with patented vertical adjustability

Superior Aesthetics

- Completely concealed and requires no cutting on the face of the frame
- Available in today's most popular finishes
- Fits in standard ANSI prep

Quality and Safety

- UL 10C fire-rated, keeping the door securely closed for three hours in fail secure mode
- ANSI/BHMA A156.31, Grade 1
- UL 1034, burglary-resistant listed and suitable for outdoor use



Grade 1



SecuriCare
Warranty



Cylindrical
Locksets



Field Selectable
(Fail secure
/Fail safe)



Dual Voltage
12/24



PoE
Friendly



Fire Rated



Outdoor
Rated



Burglary
Rated

No Cutting | Fire-Rated | Cylindrical Latchbolts

Dimensions

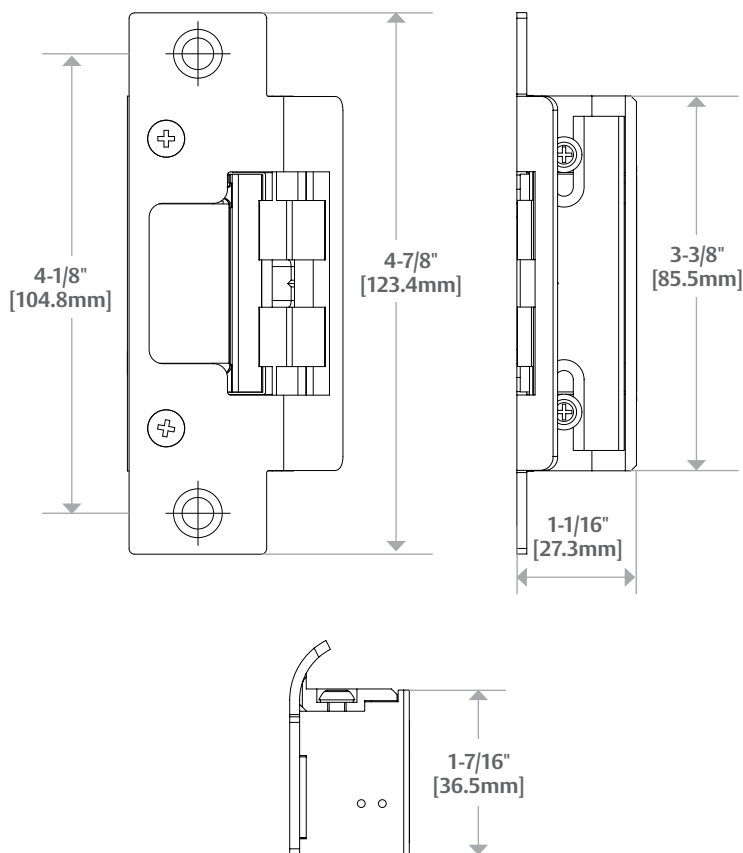


Diagram shown with 801 Option

Specifications

Certifications

- ANSI/BHMA A156.31, Grade 1
- UL 1034 burglary-resistant listed and suitable for outdoor use
- UL 294 listed
- RoHS compliant
- UL 10C fire-rated, 3 hour single door (fail secure only)
- CAN/ULC-S104 fire door conformant
- NFPA-252 fire door compliant
- ASTM-E152 fire door compliant
- NFPA 80-07 compliant

Frame Application

- Metal
- Wood

Electrical (DC Continuous Duty)

- Dual voltage 12/24 VDC/VAC
- 240 mA at 12 VDC/120 mA at 24 VDC
- PoE friendly

- Tamper-resistant
- Static strength 1,500 lbs
- Dynamic strength 70 ft-lbs
- Endurance 1 million cycles
- Field selectable fail secure /fail safe
- Non-handed
- Accommodates 1/2" – 5/8" cylindrical latchbolt (5/8" with 1/8" door gap)
- Strike body depth 1-1/16"
- Plug-in connector
- SecuriCare five-year, no-fault, no questions asked warranty

Optional Features

- **LBM** Latchbolt monitor

Accessories

- **2001M** Plug-in bridge rectifier
- **2004M** ElectroLynx® adapter
- **2005M3** SMART Pac® III
- **2006M** Plug-in buzzer

Features

Standard Features

- Falls within the guidelines for retrofit into fire-rated frames
- No cutting on frame required
- Vertical adjustability to accommodate door sag and misalignment

How to Order

| Series | Model | Finish* | Option(s) |
|--|--|-----------------------------------|------------------------------|
| 8300 | — | — 630 | — LBM |
| 8300 Universal Electric Strike; Faceplates ordered separately | C* Complete Electric Strike; Includes the 801 and 801A faceplates | 605 Bright Brass | LBM Latchbolt Monitor |
| | | 606 Satin Brass | |
| | | 612 Satin Bronze | |
| | | 613 Bronze Toned | |
| | | 629 Bright Stainless Steel | |
| | | 630 Satin Stainless Steel | |
| | | BLK Black | |

*Complete Pacs are only available in the 630 finish