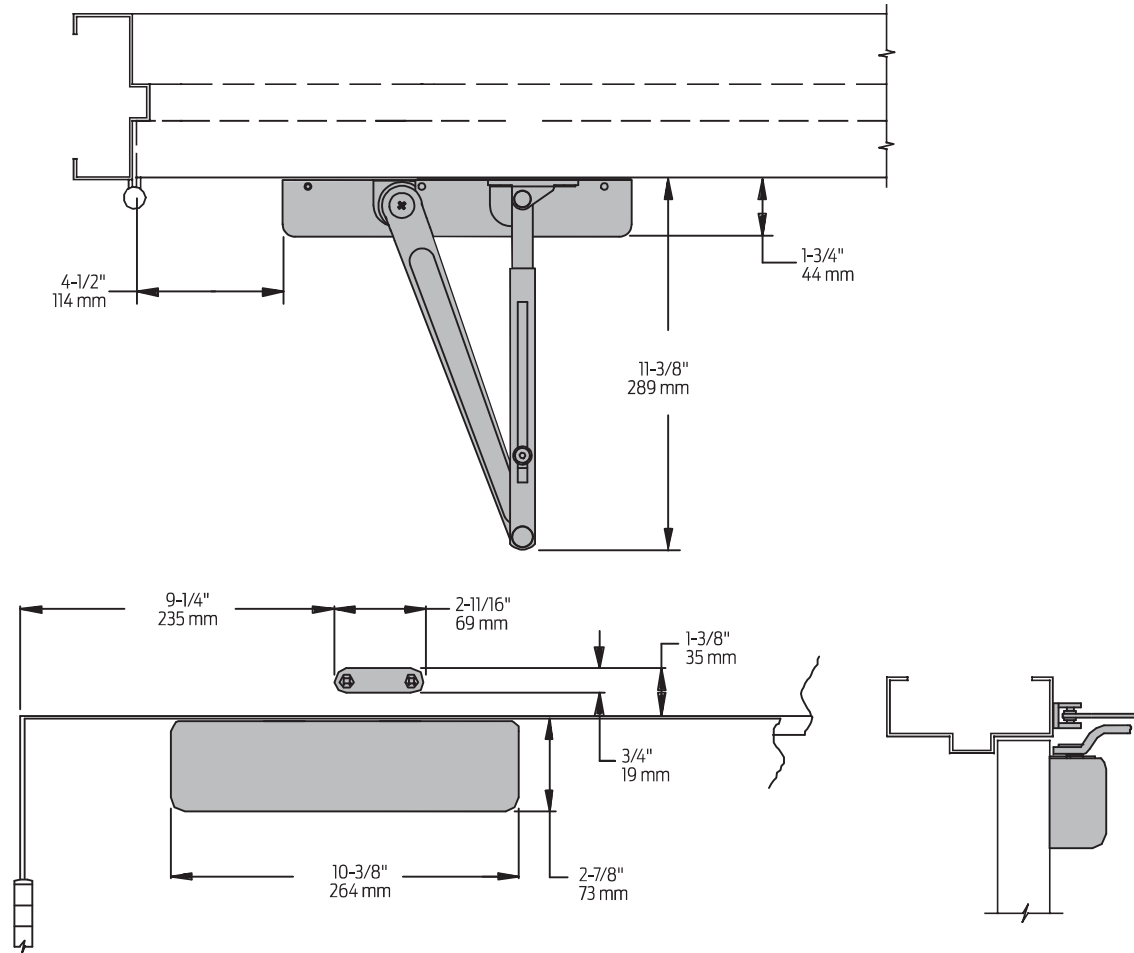


4030 Series

Mounting details

Hinge (Pull) Side Mounting



Butt Hinges	Should not exceed 5" (127 mm) in width
Auxiliary Stop	Recommended at hold-open point or where a door cannot swing 180°
Reveal	Should not exceed 3/16" (5 mm) for regular arm or 3/16" (5 mm) for hold-open arm
Top Rail	Requires 2-7/8" (73 mm) minimum
Clearance	1-3/4" (44 mm), behind door required for installation
Maximum Opening	<ul style="list-style-type: none"> ■ Can be templated for 180° ■ Hold-open points up to maximum opening with hold-open arm