

# Notes:

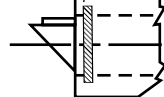
1. Backset is measured from centerline of bevel which is centerpoint of door thickness.
2. Door prep with 2-3/4" (69.9) backset meets ANSI standards A115.2 for steel doors and A115.W2 for wood doors plus through bolt holes shown.
3. Dimensions given in inches and (mm).
4. 1-1/4" strike lip suits frame for 1-3/4" thick door. Lip will vary for other door thicknesses.

## TEMPLATE CROSS REFERENCE

DESCRIPTION	TEMPLATE
CL3550 & CL3570 Dummy Trim	T30685
Curved Lip Box Strike (SC Series)	T30476
Rabbeted Front & Strike (SR118)	T30640
Full Lip Strike (SF118)	T30648

### SQUARE EDGE

5/32  $\pm .005$   
(4)



Strike/Lock/Door

### BEVELED EDGE

5/32  $\pm .005$   
(4)

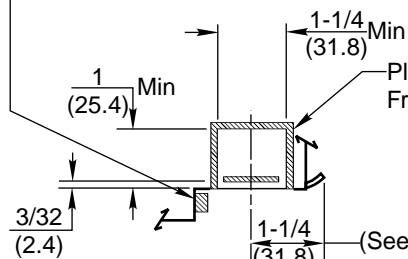


Door Thickness

3-1/2  
(89) Dia.

### CAUTION: DOOR AND FRAME MANUFACTURERS

When door gasketing or silencers are used, proper allowances must be made for strike location to maintain a common centerline with lock and door as shown so that bolt will freely enter strike.



Plaster Guard by Frame Manufacturer

Profile of optional rounded corner front

9/32 R.  
(7.1)  
(4 Places)

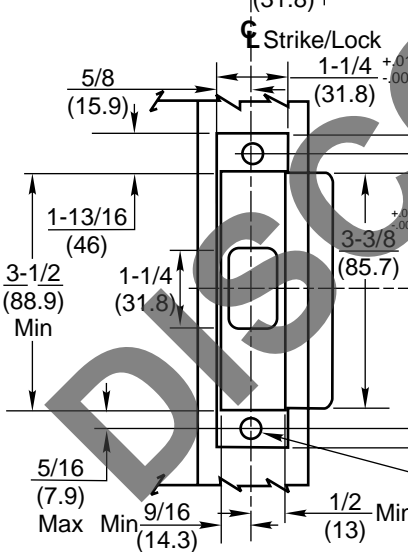
Lock/Door

A  
Backset  
(See Note 1)

### BACKSET "A"

2-3/4 (69.9)	Regular
2-3/8 (60.3)	
3-3/4 (95.3)	Optional
5 (127)	

Lock/Prep

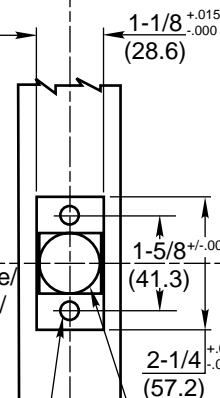


#12-24 Tap for Combination Screw (2 Places)

#8-32 Tap for Combination Screw (2 Places)

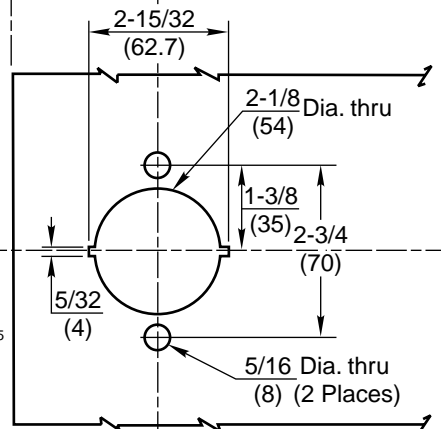
### FRAME DETAIL

ANSI Strike 217L13  
(Regularly Furnished)



1" (25.4) Dia. or  
1" (25.4) Square  
to prep hole

### DOOR DETAIL



### TOLERANCES

INCHES	(mm)
.005	(.127)
.015	(.381)

### RESPONSIBILITY

Door and Frame Manufacturers are responsible for providing adequate construction or reinforcements for proper installation of hardware shown. All architectural builders hardware must be installed on properly reinforced doors and frames, regardless of the type, material, or method of construction.

## CL3500 Series Cylindrical Lever Lockset

All Functions And Trims  
Except Dummy Trim

**Corbin  
Russwin**

www.corbinrusswin.com

Do Not Scale Drawing

Supersedes	Dr.	App.
Date	11-05	Template Number
		T31001