



Adjustable closer for light
duty commercial applications

210 SERIES

DOOR CLOSER

CATALOG

Norton®

ASSA ABLOY

Experience a safer
and more open world




INTRODUCTION

The 210 Series is an adjustable door closer for light traffic commercial openings, including office and utility closet doors. It features an adjustable spring; tri-packed, non-hold open arms; and both independent and separate latch, sweep and backcheck intensity valves. The 210 is ideal for stocking distributors serving high-volume after-market segments.

FEATURES

- » Adjustable spring size 1 through 6
- » Non-handed
- » Cast aluminum body
- » Rack-and-pinion design
- » Independent latch sweep and backcheck intensity valves
- » Full plastic cover
- » Non-hold open, hold open and heavy-duty arms
- » Closer footprint: 3/4" x 12"
- » Cover dimensions: 2-15/16" high x 2-1/8" deep x 13-1/16" long
- » Available in 689 (aluminum) or 690 (dark bronze) finishes
- » Sex nuts (SN-134) included
- » 10 year limited warranty

CERTIFICATIONS

- » ANSI/BHMA A156.4, Grade 1 
- » UL / cUL listed for use on fire rated doors 
- » UL10C listed for positive pressure fire test
- » Meets requirements for Americans with Disabilities Act (ADA)  and ANSI/BHMA A117.1

CAUTION: Door Closers for Low Opening Force Applications:

Door closers installed in openings required to meet the requirements of the Americans With Disabilities Act or ANSI/BHMA Standard A117.1, when adjusted to meet those requirements, may not provide adequate closing power to dependably close and latch the door based on opening or site conditions.

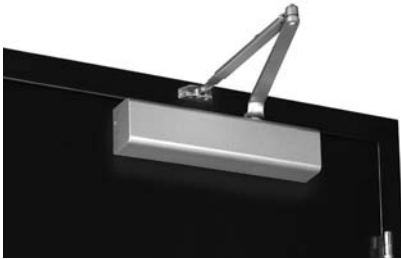
TABLE OF CONTENTS

Features, Certifications	2
Applications	3
How to Order	4



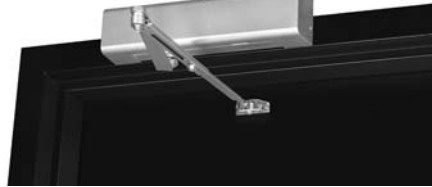
APPLICATIONS

Standard Arms



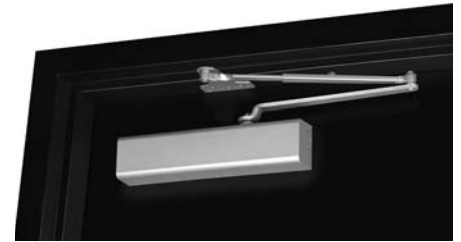
TPN arm shown (regular mounting)

- » Pull-side application
- » Closer mounted on the door



TPN arm shown (top jamb mounting)

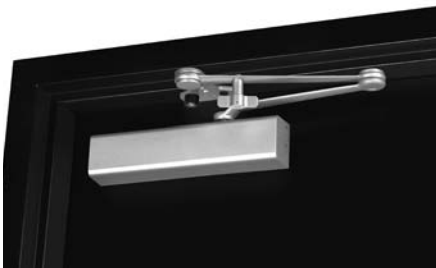
- » Push-side application
- » Closer mounted on the frame
- » Minimum top rail = 2-1/4" (57mm)
- » Maximum frame reveal = 2-3/4" (70mm)



TPN arm shown (parallel mounting)

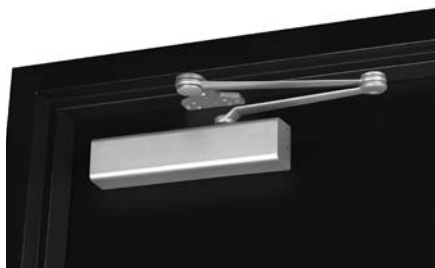
- » Push-side application
- » Closer mounted on the door

Heavy Duty Arms



HDH arm (with stop) shown

- » Push-side application
- » Stop is removable



HDN arm (without stop) shown

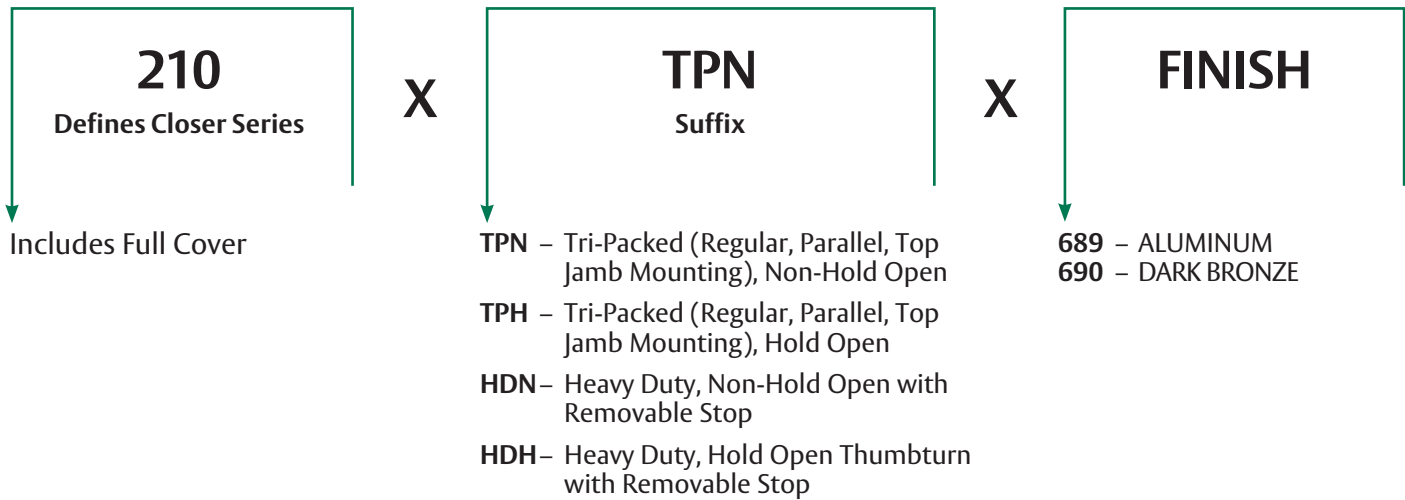
- » Push-side application
- » Stop is removable

NOTE: Arms are not interchangeable with Norton's premium line of closers.
Contact factory if door weights exceed 225 lbs.

ACCESSORIES

Part Number	Description
210P	Full Plastic Cover
SP210	Screw pack for TPN arm

HOW TO ORDER



NOTES:

- » Door closer warranty becomes void if the closer is installed on the exterior side of a door in the exterior wall of a building.
- » It is strongly recommended, and may be required on fire door assemblies, that doors having a door closer be hung on ball-bearing or anti-friction hinges or pivots. Consult local authority having jurisdiction.
- » Failure to use fasteners supplied with closer may void factory warranty.
- » Fasteners for fire/smoke door assemblies must conform to NFPA 80. In some applications additional fasteners may be mandated by NFPA 80 that are not shipped with standard Norton product, such as sleeve-nuts/sex-nuts or thru bolts and grommet nuts.
- » Information provided is based on 1-3/4" (44mm) x 7' (2.13m) standard weight doors swinging to 110°. Other conditions (such as door height or weight; or wind/draft conditions) may require adjustment of spring setting, selection of a larger size closer or different closer.

The ASSA ABLOY Group is the global leader in access solutions. Every day, we help billions of people experience a more open world.

ASSA ABLOY Opening Solutions leads the development within door openings and products for access solutions in homes, businesses and institutions. Our offering includes doors, frames, door and window hardware, locks, perimeter fencing, access control and service.

Since 1880, Norton door controls have been an integral part of schools, hospitals and businesses around the globe. When you need products and people that perform at the highest level, rely on Norton – From Open to Close.

Norton Door Controls | www.nortondoorcontrols.com
3000 Highway 74 East | Monroe, NC 28112 | 1.877.974.2255

ASSA ABLOY Opening Solutions
Door Security Solutions Canada | www.assaabloy.ca
160 Four Valley Drive | Vaughan, ON L4K 4T9 | 800.461.3007