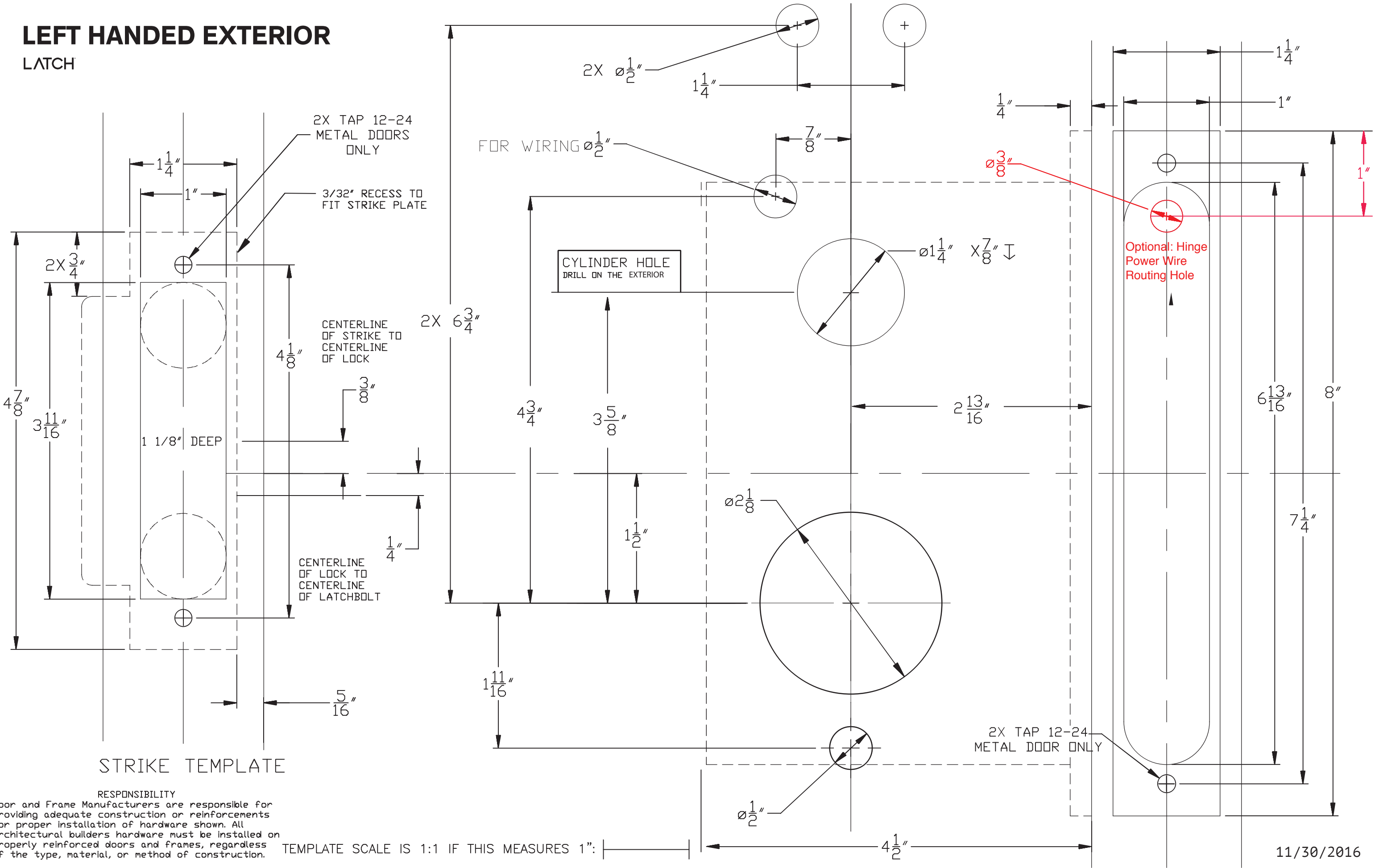
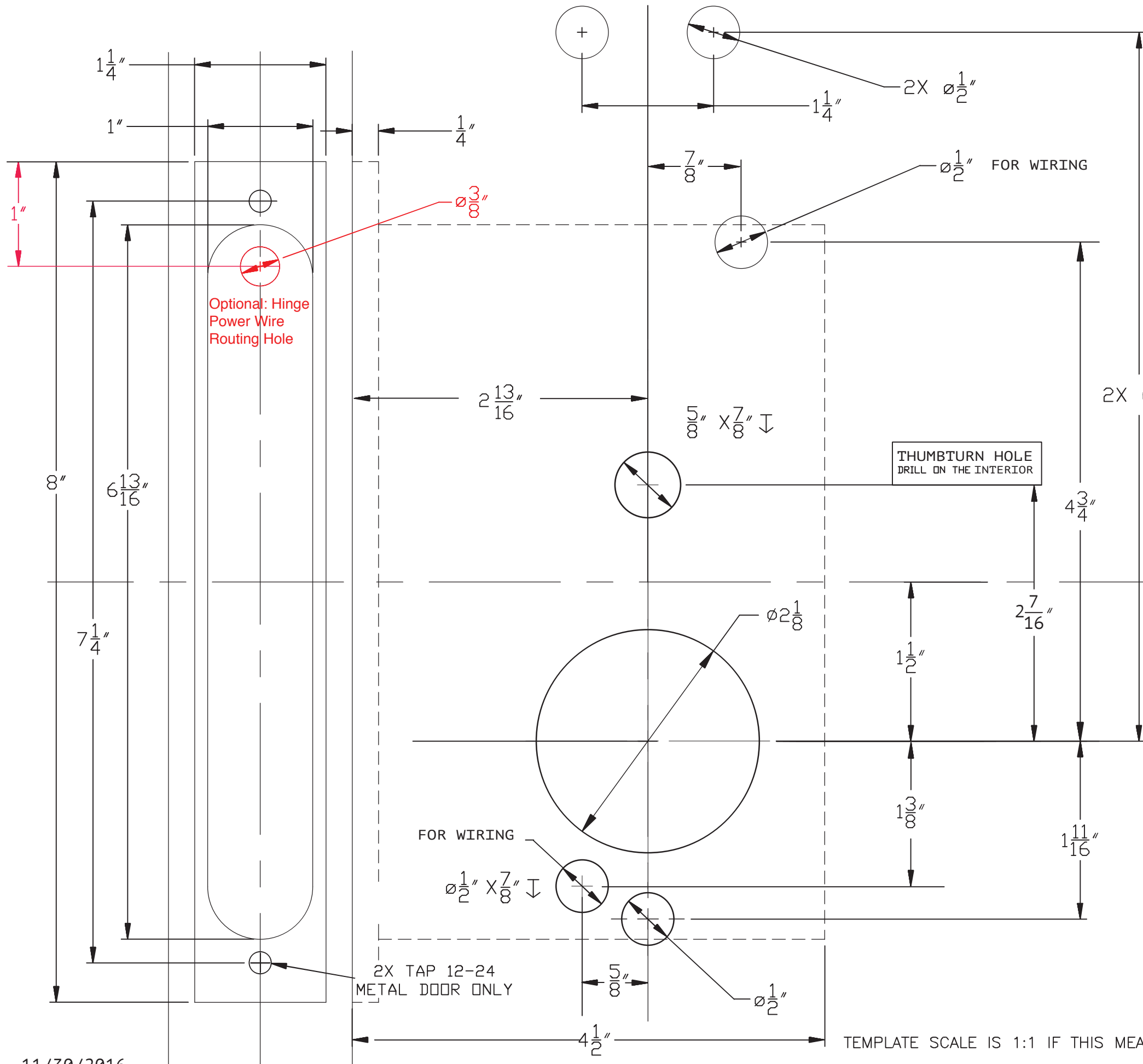
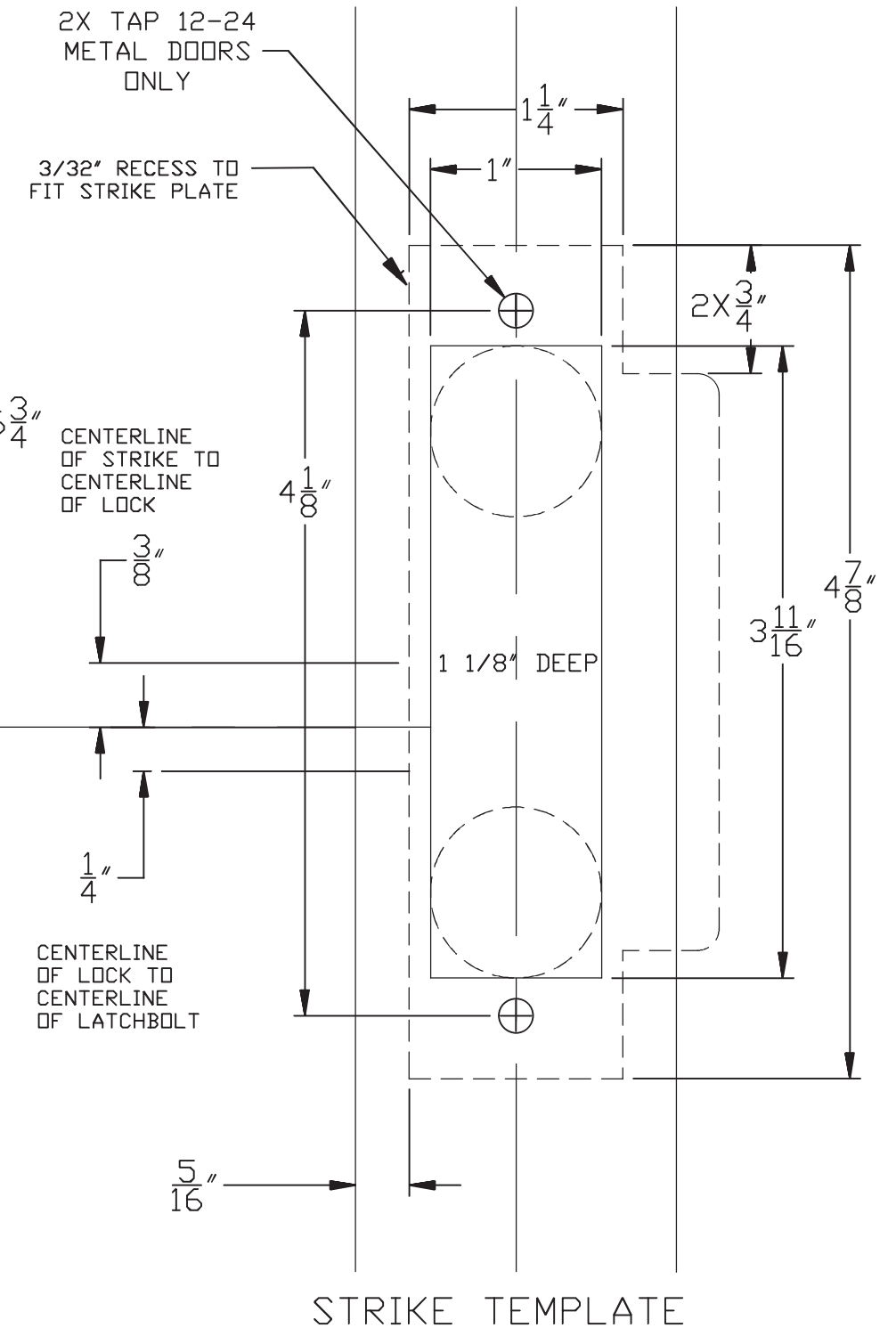


LEFT HANDED EXTERIOR
LATCH

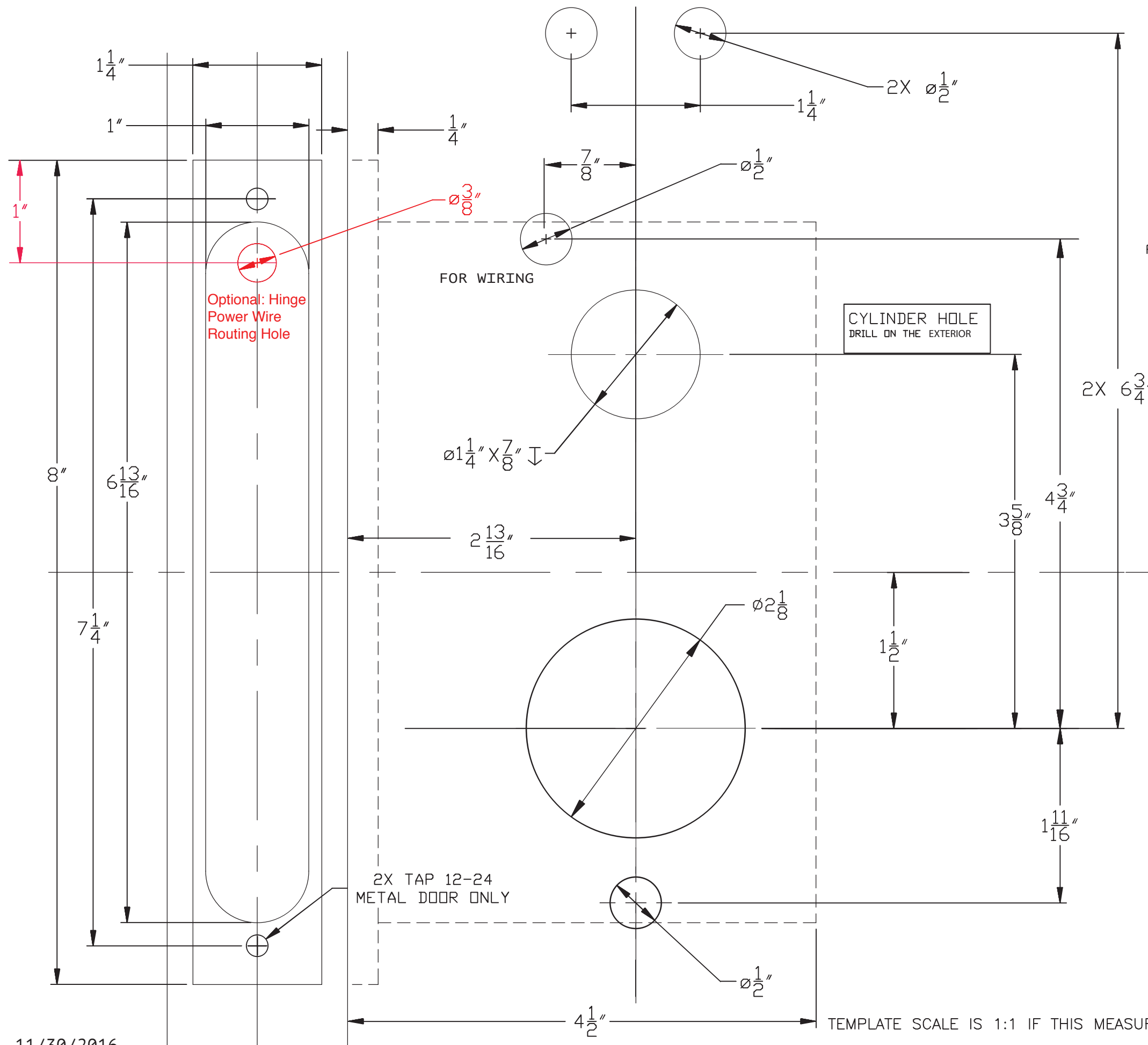




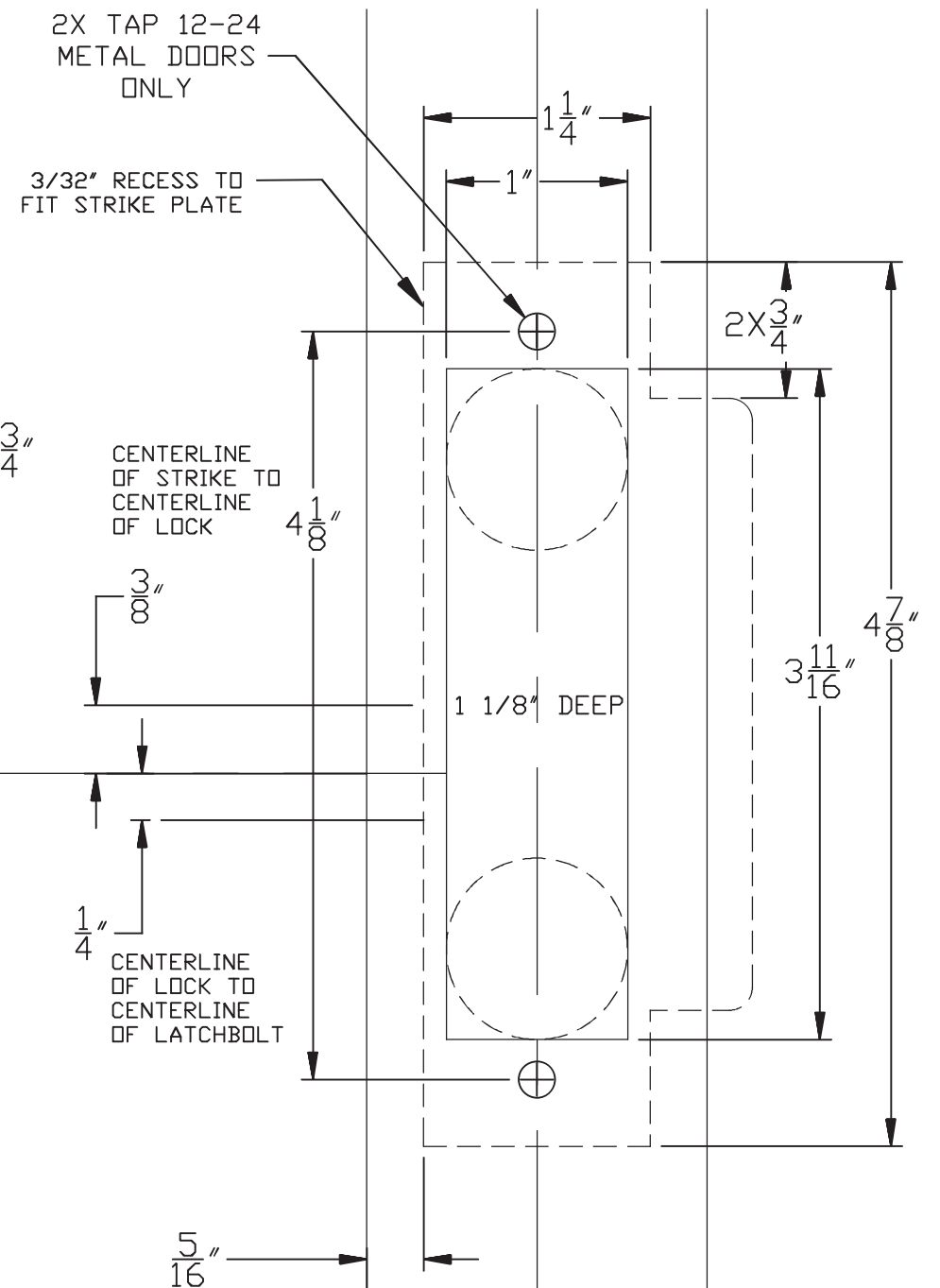
LEFT HANDED INTERIOR LATCH



RESPONSIBILITY
 Door and Frame Manufacturers are responsible for providing adequate construction or reinforcements for proper installation of hardware shown. All architectural builders hardware must be installed on properly reinforced doors and frames, regardless of the type, material, or method of construction.



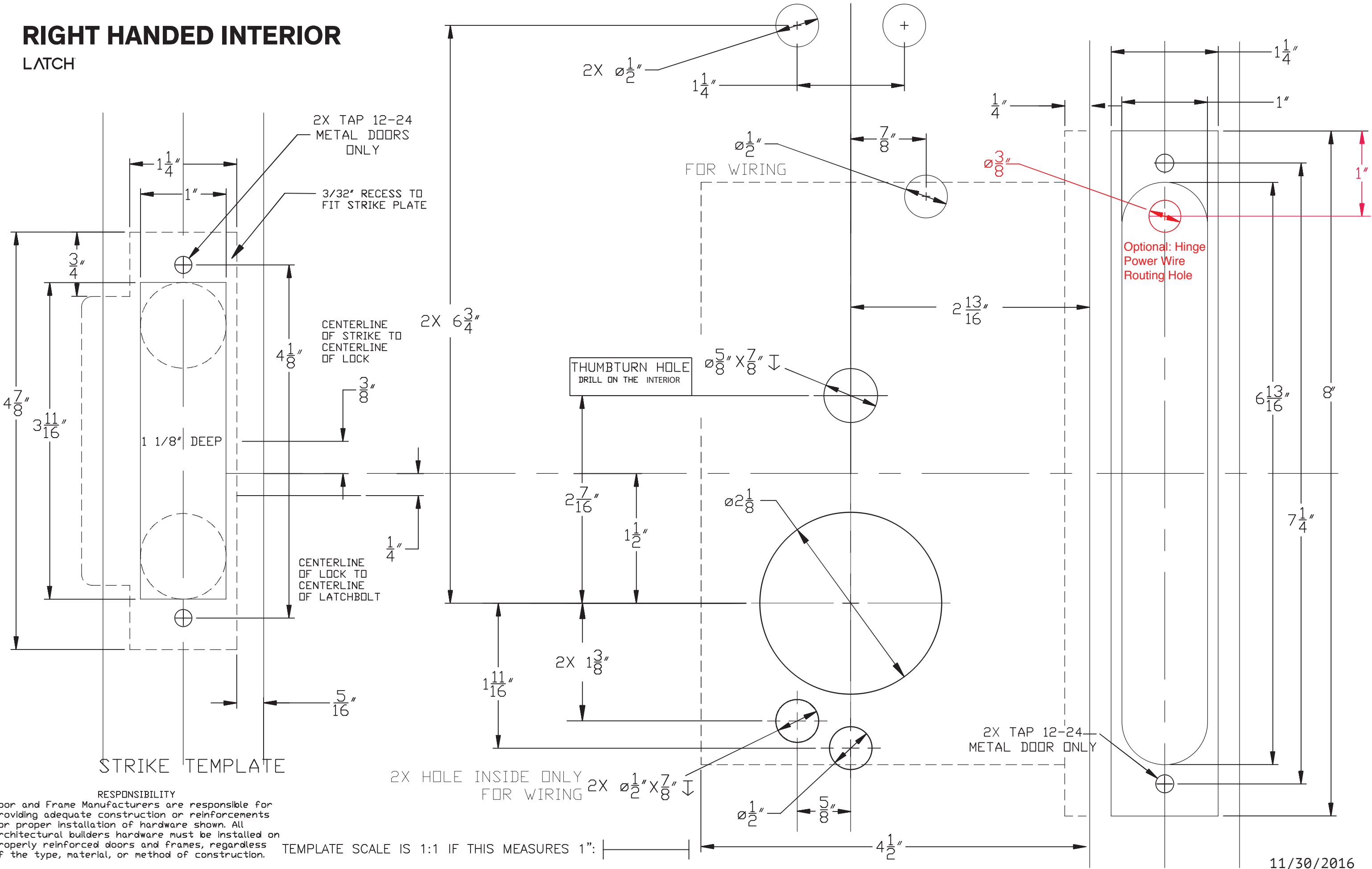
RIGHT HANDED EXTERIOR LATCH



STRIKE TEMPLATE

RESPONSIBILITY
Door and Frame Manufacturers are responsible for providing adequate construction or reinforcements for proper installation of hardware shown. All architectural builders hardware must be installed on properly reinforced doors and frames, regardless of the type, material, or method of construction.

RIGHT HANDED INTERIOR
LATCH



RESPONSIBILITY
Door and Frame Manufacturers are responsible for providing adequate construction or reinforcements for proper installation of hardware shown. All architectural builders hardware must be installed on properly reinforced doors and frames, regardless of the type, material, or method of construction.

TEMPLATE SCALE IS 1:1 IF THIS MEASURES 1":

POWER THROUGH HINGE INSTALL

LATCH

