

### Automatic Operator Actuators & Accessories



**8310-853**  
Wall Mounted Actuator

- Hardwired low voltage actuator with stainless steel touch plate in 4-3/4" (121mm) square
- Engraved blue filled handicap symbol conforms to most accessibility codes
- Designed to mount in a flush or surface mount box (sold separately) in/on a vertical surface near the controlled door
- Optional mounting in single gang electrical box (by others) or double gang box (4" x 4" by others) or on an 8310-866 bollard post
- Heavy industrial grade components provide vandal resistant mounting and weather resistant switch standard



**8310-853T**  
Wall Mounted Actuator

- Same as the 8310-853, with the added engraving of "Push to Open"



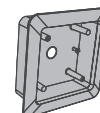
**8310-853WP**  
Surface Mounted Actuator

- Wireless, low profile, low voltage actuator with square, stainless steel touch plate in 4-3/4" (121mm) square
- Engraved blue filled handicap symbol conforms to most accessibility codes
- Surface mount box includes integral transmitter w/ battery and actuator switch
- Heavy industrial grade components provide vandal resistant mounting and weather resistant switch standard
- Requires 8310-865 Receiver



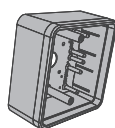
**8310-853TWP**  
Surface Mounted Actuator

- Same as the 8310-853WP, with the added engraving of "Push to Open"



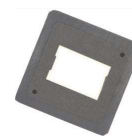
**8310-867F**  
Flush Mount Box

- Rugged Plastic Box
- 4-3/4" Square
- Optional accessory - can be used w/ any 4-3/4" square actuator



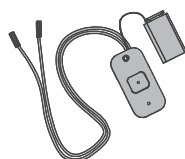
**8310-867S**  
Surface Mount Box

- Rugged Plastic Box, 4-3/4" Square
- Optional accessory - can be used w/ any 4-3/4" square actuator



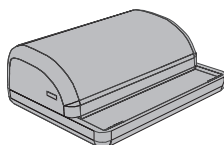
**8310-801**  
Weather/Trim Ring

- Plastic Weather Ring, 4-3/4" Square
- Optional accessory - can be used w/ any 4-3/4" square plastic mounting box



**8310-844**  
Transmitter

- Wireless, 1 Channel, 9v battery included
- Use to convert standard wall mount actuator to wireless
- Requires 8310-865 Receiver



**8310-865**  
Receiver

- Wireless, 1 Channel, w/ Sequencing Feature
- Used in conjunction w/ Wireless Actuators & Transmitter(s)



**8310-813**  
Touchless Wall Mounted Actuator

- Hardwired low voltage actuator with plastic plate in 4-3/4" (121mm) square
- Optional mounting in single gang electrical box (by others) or double gang box (4" x 4" by others)