

### Cylinder



**2031(2)(3)(4)(5)-3071**  
Cast Iron Cylinder Assembly

- Handed
- With mounting plate
- Standard

### Arm



**2030-3077T**  
Standard Arm

- Handed
- Track roller not included with arm

### Tracks



**2030-3038**  
Standard Track

- Non-handed
- Non hold-open
- Will accept hold-open clip and/or bumper assembly
- Standard



**2030-3038B**  
Standard Track with Bumper

- Non-handed
- Non hold-open
- Will accept hold-open clip
- Optional



**2030-3038H**  
Hold-Open Track

- Non-handed
- Will accept bumper assembly
- Optional



**2030-3038HB**  
Hold-Open Track with Bumper

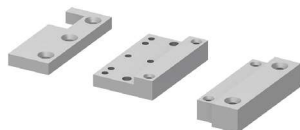
- Non-handed
- Optional

### Installation Accessories



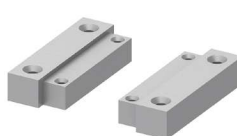
**2030-420**  
Fire Shield

- 22 gauge steel liner mounts in the track mortise of the door's top rail for 20 minute labeled wood doors



**2030-416**  
Wood Mounting Clip Set

- Simplifies mounting center pivoted 2030 closer in wood frame
- Includes latch stile clip, hinge stile clip, and cover
- For use with Ives Series center pivots
- Consult factory for special template



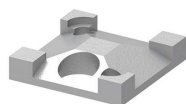
**2030-417**  
Wood Mounting Clip Set

- Simplifies mounting offset pivoted or butt hung 2030 closer in wood frame
- Includes two clips
- For use with offset pivots
- Consult factory for special template



**2030-169**  
Track Bumper

- Mounts in track to assist backcheck. Limits maximum opening.
  - Consists of bumper, bumper post, and mounting screw
- NOTE: Track bumper does not replace auxiliary stop*



**2030-3054**  
Hold-Open Clip

- Mounts in track to provide hold-open function
- Hold-open point controlled by clip location
- Requires 2030-3034H Hold-Open Track Roller



**2030-3034**  
Track Roller

- Quiet, low friction roller assembly
- Shoulder dimension "X" = 1/16" (2mm)



**2030-3034H**  
Hold-Open Track Roller

- Quiet, low friction roller assembly
- Shoulder dimension "X" = 1/16" (2mm)