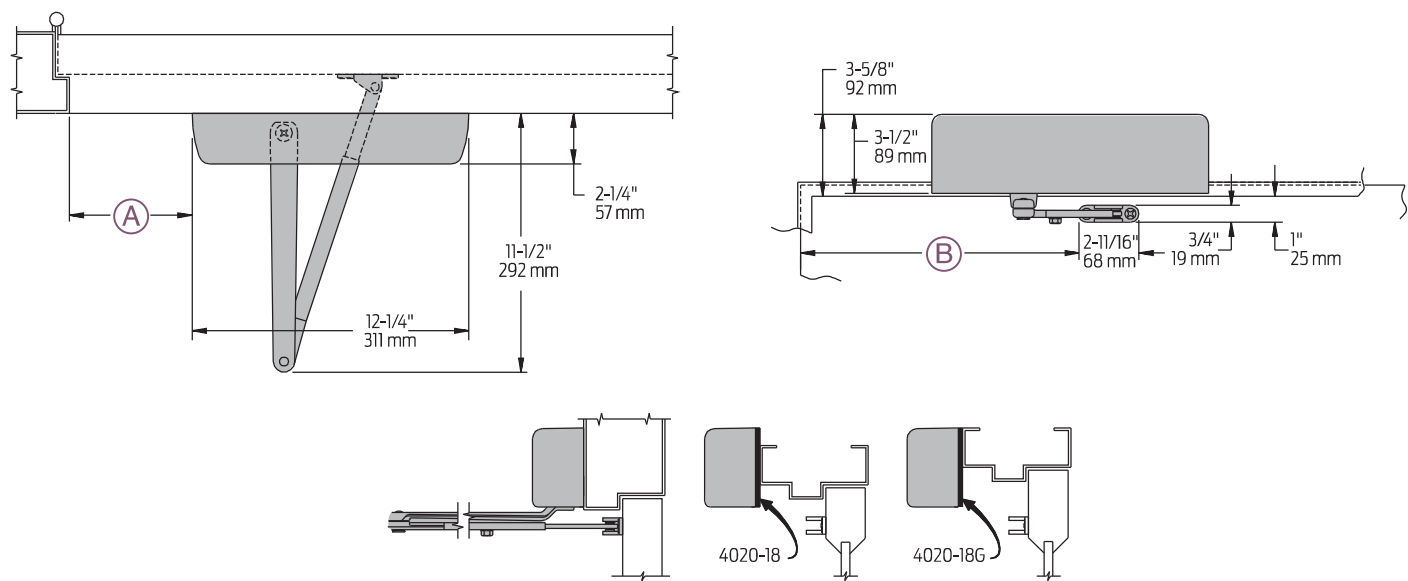


4020
Series

Mounting details

Top Jamb (Push) Side
Mounting



Butt Hinges	Should not exceed 5" (127 mm) in width		
Auxiliary Stop	Recommended at hold-open point or where the door cannot swing 180°		
Reveal	<ul style="list-style-type: none">■ 2-9/16" (65 mm) allows 180° opening with regular arm■ 4-13/16" (122 mm) allows up to 140° opening with regular arm■ 8" (203 mm) allows up to 140° opening with LONG ARM where standard rod and shoe is replaced with optional long rod and shoe (4020-79LR)		
Head Frame	Less than 3-7/16" (87 mm) requires PLATE, 4020-18 Use PLATE, 4020-18G for flush ceiling condition. Either plate requires 1-3/4" (44 mm) frame minimum.		
Top Rail	<ul style="list-style-type: none">■ Requires minimum 1-1/2" (38 mm)■ Closer on 4020-18 plate requires 2" (51 mm) minimum■ Closer on 4020-18G plate requires 2-3/4" (70 mm) minimum		
Delayed Action	<ul style="list-style-type: none">■ Add suffix "DEL" to selected cylinder.■ Not available with 4026 cylinder■ Delays closing from maximum opening to approximately 75°■ Delay time adjustable up to approximately 1 minute		
Maximum Opening	Can be templated for:		
	100°: A = 6" (152 mm) B = 12 3/8" (314 mm)	140°: A = 4" (102 mm) B = 10 3/8" (264 mm)	180°: A = 2" (51 mm) B = 8 3/8" (213 mm)

Notes:

- Hold-open points up to maximum opening or 140°, whichever is less, for hold-open or fusible link arm
- For hold-open beyond 140°, use 4110 Series closer