

CL Series Cylindrical Locks: Security That Fits



Versatile Locking Solutions for Any Environment

The security needs of your facility are complex and varied. Each opening has its own requirements, and choosing the right lock based on those demands is critical and sometimes overwhelming.

That's why Corbin Russwin created the versatile CL Series cylindrical locks. Designed with institutional and commercial environments in mind, these locks offer durability, strength, and reliability regardless of application.



CL3100 Vandal-Resistant Grade 1 Lock

Designed to withstand abusive environments, the CL3100 features our unique torque-resistant T-Zone construction and provides strength and durability far exceeding the A156.2 Series 4000 Grade 1 standards.



CL3300 Grade 1 Cylindrical Lock

Your "go-to" Grade 1 lockset, the CL3300 offers many functions and is easy to install and retrofit.



CL3800 Grade 2 Cylindrical Lock

This economical, Grade 2 lockset provides an outstanding combination of value and performance without compromising functionality or durability.

CL3100 Series

Vandal Resistant Grade 1 Lock



BENEFITS

- **Durable and Reliable:** Independently verified cycle testing proves the CL3100 series will last the lifetime of the facility
- **Flexible:** Integrates with numerous key systems and utilizes one lockbody for multiple functions, simplifying facility maintenance
- **Lower Cost of Ownership:** Fewer inventoried parts combined with a high number of opening cycles results in less time and frequency for maintenance and reduced overall expenses
- **Safe and Secure:** Torque resistant T-Zone construction provides ability to withstand tough environments to keep occupants and property safe and secure
- **Sustainable:** Contributes to your sustainability efforts - fewer lock replacements due to long life and high post-consumer recycled content
- **Healthy Environment:** Microshield® antimicrobial coating available; supplements your cleaning protocol for a healthier environment

FEATURES

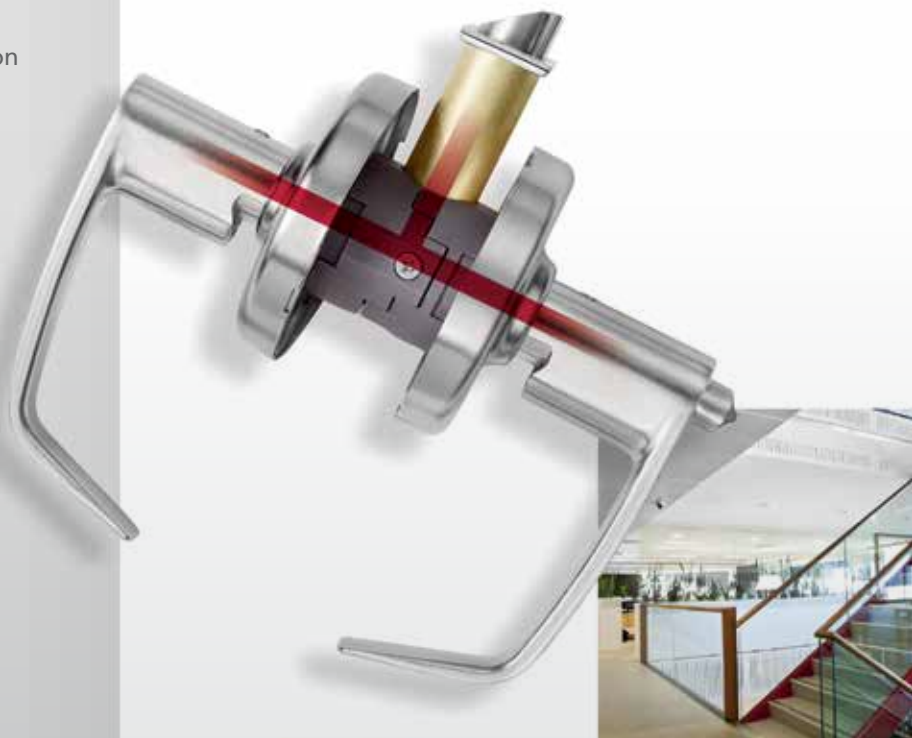
- 18 functions available, including Classroom Security; most requiring only two parts to change
- Simple cylinder removal provides easy change outs
- Integrates into most existing facility's key systems, including Best® SFIC and Schlage® LFIC
- Retrofits most standard 161 cylindrical lock door preps and is non-handed
- Made from 68% post-consumer recycled content as per LEED MR credit 4
- 10-year limited warranty
- Available in 14 architectural finishes and Microshield® antimicrobial coating

TYPICAL APPLICATIONS

- High traffic areas
- Offices
- Public buildings
- Hospitals
- Institutions
- Educational facilities
- Retail

DURABILITY AND CYCLE TESTING

- Withstands more than **TWO TIMES** ANSI/ BHMA A156.2 Grade 1 torque force on a locked lever
- T-Zone lock technology tested to **15 times** the standard in ANSI/BHMA A156.2 Grade 1 cycle testing
- **15 MILLION** cycles equals over 55 years of opening life in many facilities!



CL3300 Series

Grade 1 Cylindrical Lock



BENEFITS

- **Safe and Secure:** ANSI/BHMA Grade 1 lock manufactured with high quality materials; specialized functions allow for quick and secure lockdowns
- **Flexible:** 26 functions (2 electromechanical); 'go-to' cylindrical lock for almost any opening
- **Ease of Installation and Retrofit:** EZ-Install components significantly reduce install time and cover ANSI/BHMA Door Prep A156.115
- **Compatible:** Integrates into most existing facility's key systems, including Best® SFIC and Schlage® LFIC

FEATURES

- 26 functions available, including electromechanical
- Independent return springs to prevent lever sag
- Through-bolted cylindrical chassis prevents rotation and ensures proper alignment
- 7-year limited warranty
- Available in 14 architectural finishes and Microshield® antimicrobial coating

APPLICATIONS

- Corporate campuses
- Multi-family housing
- Restaurants
- Educational Facilities



CL3800 Series

Grade 2 Cylindrical Lock



BENEFITS

- **Reliable:** Exceeds ANSI/BHMA A156.2 Grade 2 cycle requirements
- **Flexible:** 18 functions; standard-duty cylindrical lock for light commercial applications
- **Compatible:** Visually consistent with CL3100 and CL3300 Grade 1 locks to provide the right level of security with similar aesthetics

FEATURES

- 18 functions available
- Steel lock chassis, zinc dichromated for corrosion resistance
- Non-handed
- 5-year limited warranty
- Available in 14 hardware finishes and Microshield® antimicrobial coating

APPLICATIONS

- Interior offices
- Closets
- Multi-family housing
- Restaurants
- Retail complexes

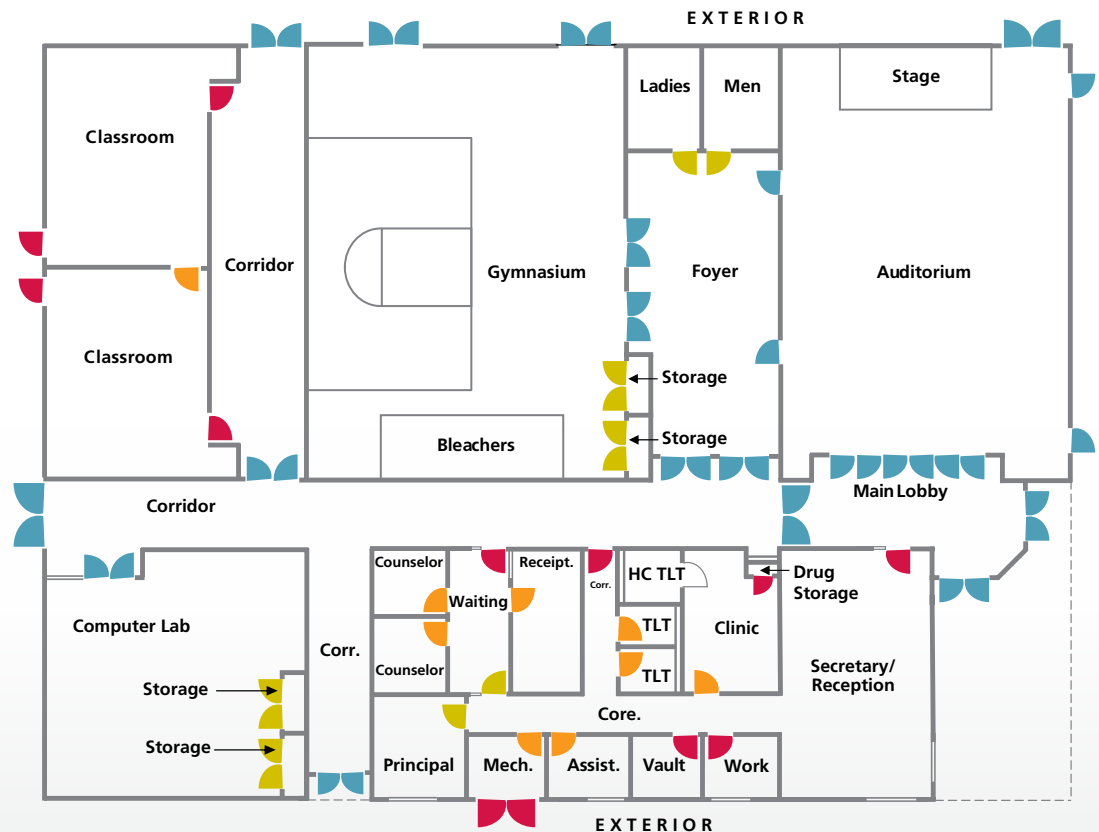




With the options available in **CL3100**, **CL3300**, and **CL3800** Series locks, you can always find the right lock for each opening. And no matter which lock you choose, you can depend on their strength, lasting durability, and the flexibility. The floor plans below show how the combination of these Series' secure the diverse openings in a facility.

SCHOOL EXAMPLE

- CL3100 Series
- CL3300 Series
- CL3800 Series
- Exit Device



For additional information, contact your
ASSA ABLOY Door Security Solutions
sales consultant or visit www.corbinrusswin.com.



ASSA ABLOY

Corbin Russwin Architectural Hardware
225 Episcopal Road, Berlin, CT 06037
Phone 800-543-3658
Fax 800-447-6714
www.corbinrusswin.com



MicroShield®

As part of their promise to provide innovative solutions to their customers, certain ASSA ABLOY Group brands offer the MicroShield® technology, registered with the EPA and FDA. MicroShield® is a silver-based antimicrobial coating designed to inhibit the growth of bacteria. MicroShield® is a registered trademark of Yale Security Inc., an ASSA ABLOY Group company.

ASSA ABLOY is the global leader in door opening solutions, dedicated to satisfying end-user needs for security, safety and convenience.

Corbin Russwin and Design® is a registered trademark of Corbin Russwin, Inc., an ASSA ABLOY Group company. These materials are protected under US copyright laws. Other products' brand names may be trademarks or registered trademarks of their respective owners and are mentioned for reference purposes only. All contents current at time of publication. Corbin Russwin, Inc., an ASSA ABLOY Group company reserves the right to change availability of any item in this product bulletin, its design, construction, and/or its materials. Copyright © 2015 Corbin Russwin, Inc., an ASSA ABLOY Group company. All rights reserved. Reproduction in whole or in part without the express written permission of Corbin Russwin, Inc. is prohibited.

45422-12/15N