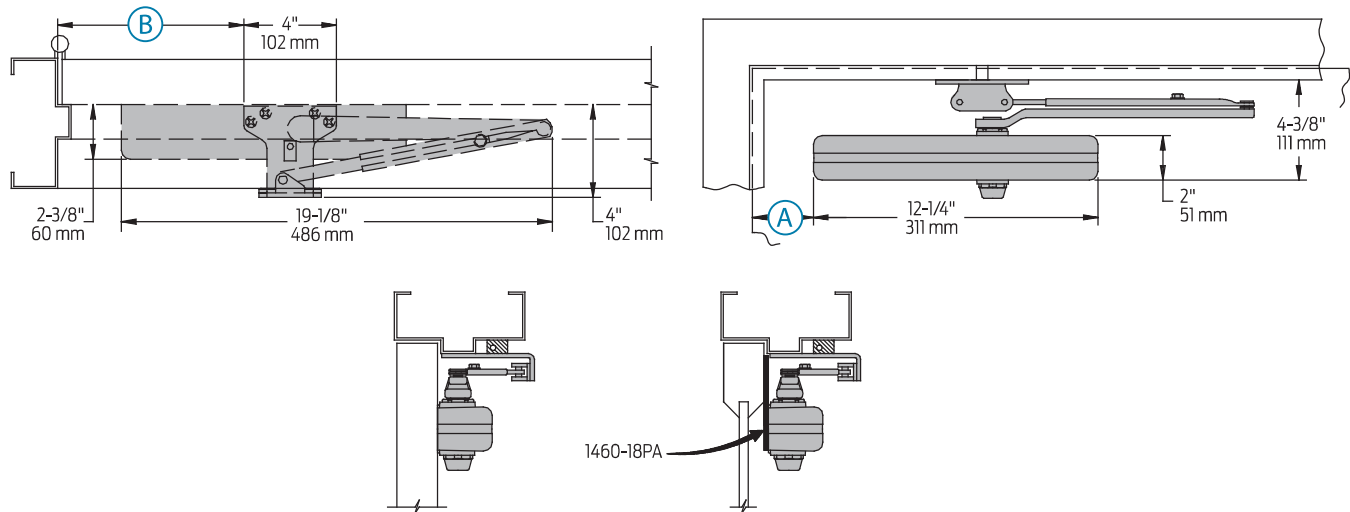


# 1460 Series

## Mounting details

### Parallel Arm (Push Side) Mounting



<b>Butt Hinges</b>	Should not exceed 5" (127 mm) in width
<b>Auxiliary Stop</b>	Recommended at hold-open point, where a door cannot swing 180°, or where CUSH-N-STOP arm is not used
<b>Top Rail</b>	<ul style="list-style-type: none"> <li>■ Less than 4-3/8" (111 mm) measured from the stop requires PLATE, 1460-18PAFC</li> <li>■ Plate requires 1-3/4" (44 mm) minimum, Plate requires 1-1/4" (32 mm) minimum</li> <li>■ With Designer Series metal cover, use PLATE, 1460-18PADSI</li> </ul>
<b>Clearance</b>	1460-62PA shoe projects 4" (102 mm) from door face
<b>Head Frame</b>	Flush or single rabbeted requires PA SHOE ADAPTER, 1460-419
<b>Stop Width</b>	Minimum 1" (25 mm)
<b>Blade Stop</b>	Clearance, requires 1/2" (13 mm) BLADE STOP SPACER, 1460-61
<b>Auxiliary Shoe</b>	<ul style="list-style-type: none"> <li>■ 1460-62A allows installation of regular arm with overhead holder/stop</li> <li>■ Special templating required</li> </ul>
<b>Delayed Action</b>	<ul style="list-style-type: none"> <li>■ Add suffix "DEL" to selected cylinder (eg. P1460 DEL)</li> <li>■ Delays closing from maximum opening to approximately 75°</li> <li>■ Delay time adjustable up to approximately 1 minute</li> </ul>
<b>Maximum opening</b>	<p>Regular or hold-open arm can be templated to</p> <p>100°:    A = 4-1/4" (108 mm)           B = 9-1/4" (235 mm)</p> <p>or 180°:    A = 1-3/4" (44 mm)               B = 6-3/4" (171 mm)</p> <p>Hold-open points up to maximum opening with hold-open arm.</p>

#### Notes:

- Optional mounting requires PA SHOE, 1460-62PA for REGULAR or HOLD-OPEN arms. Add prefix "P" to closer description (e.g. P1460)
- P1460 closer includes 1460-201 FIFTH HOLE SPACER to support PA SHOE.