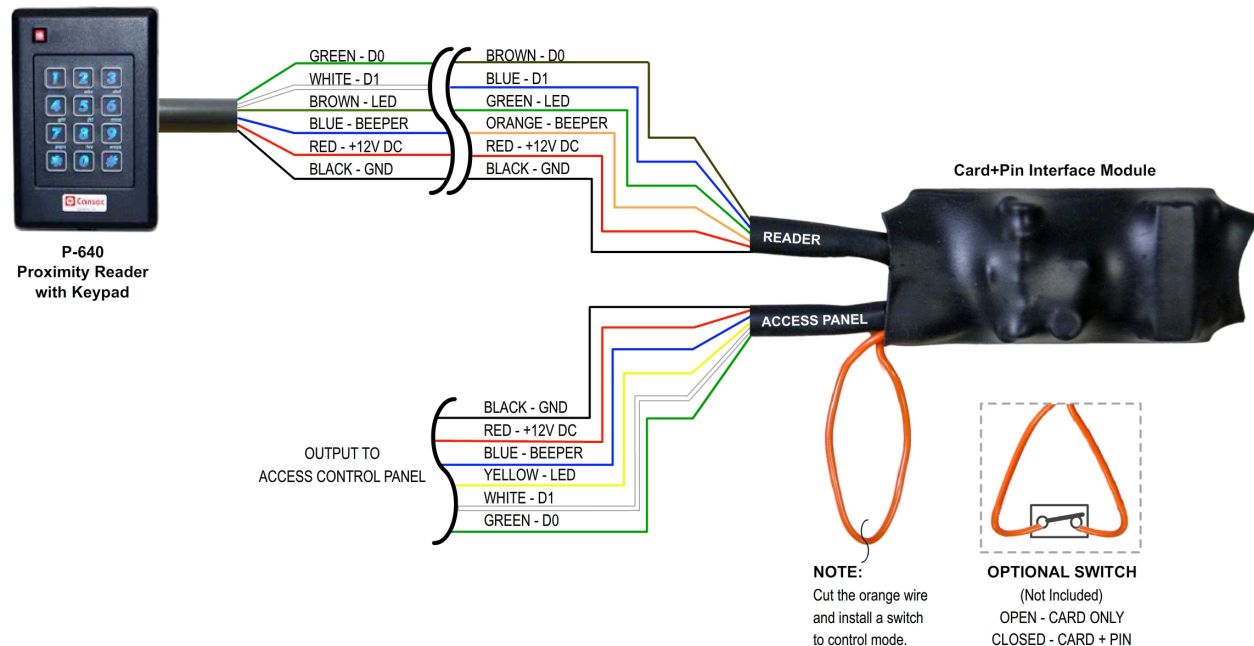


Cansec developed the CA-CARD+PIN interface board to allow Card plus Pin capability to be added to access control units which do not have that capability.

The interface board is designed to be used with Cansec's P-640-HA combination keypad/prox reader.

The keypad/prox reader is connected to the interface board which in turn is connected to a regular Wiegand reader port on a Cansec controller or any other manufacturer's controller (see drawing below).



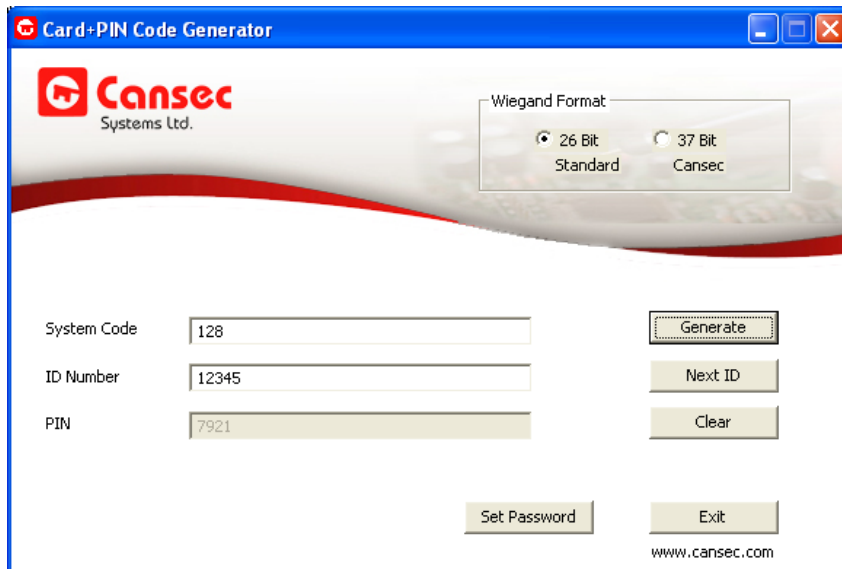
When a card is presented, the user must enter a 4 digit PIN which is algorithmically derived from the System Code and ID number of the card they presented. If the correct PIN is entered on the keypad, the System Code and ID data from the card is transmitted to the connected access control unit. If the PIN entered is not correct, or no PIN is entered, nothing is sent to the connected controller.

In addition to operating in Card+PIN mode, the mode can be changed to Card Only mode by opening the orange wire using a dry contact relay from an access control system, a programmable timer, key-switch etc. This allows, for example, the reader operating mode to be set to Card Only mode during the day and Card+PIN off hours.

If the mode control circuit is connected to a relay which is managed by an access system, the mode can be changed manually by the operator or in response to certain events (subject to the capability of the access control system used).

This could include things such as time, date, specified input point in alarm, specified card used at selected readers, etc.

A simple Windows software utility is provided (no charge) which is used to determine the PIN for any specified card (see screen capture below);



The PIN generation software and Card+PIN adapter board support standard 26 bit and Cansec 37 bit Wiegand formats.