

INSTRUCTIONS FOR INSTALLING 3828 SERIES RIM EXIT DEVICE

Patent pending and/or patent www.assaabloydss.com/patents

SARGENT®
ASSA ABLOY

CAUTION!

BEFORE STARTING:

- INSTALL MULLION IF USED;
- DOOR SHOULD BE FITTED AND HUNG;
- CHECK BOX LABEL FOR SIZE OF EXIT DEVICE.

AVAILABLE STOCK LENGTHS:

- LENGTH "E" - 32" DOOR, NO CUT REQUIRED.
CAN BE CUT TO FIT DOORS DOWN TO 24" WIDE.
- LENGTH "F" - 36" DOOR, NO CUT REQUIRED.
CAN BE CUT TO FIT DOORS DOWN TO 30" WIDE.
- LENGTH "G" - 48" DOOR, NO CUT REQUIRED.
CAN BE CUT TO FIT DOORS DOWN TO 36" WIDE.

IMPORTANT:

1. FOR RIM CYLINDER APPLICATIONS:
INSTALL CYLINDER TAIL WASHER TO CYLINDER
TAIL PIECE. SEE STEP THREE FOR DETAILS.
2. CLEAR AWAY ANY RAISED PROJECTIONS
TO ALLOW EXIT DEVICE TO REST
ON FLAT SURFACE
OF THE DOOR.

CYLINDER
TAIL WASHER

END CAP

MOUNTING
BRACKET

"LOCK DOWN KEY"
TO OPERATE: DEPRESS PUSHRAIL;
INSERT HEX KEY AND TURN CLOCKWISE.

RAIL ASSEMBLY

HORIZONTAL
REFERENCE LINE
(\varnothing OF CHASSIS AND
RAIL ASSEMBLY)

641 STRIKE SHOWN

CENTER
CHASSIS
ASSEMBLY

VERTICAL REFERENCE LINE
(\varnothing OF CHASSIS)

THIS EXIT DEVICE IS NON-HANDED

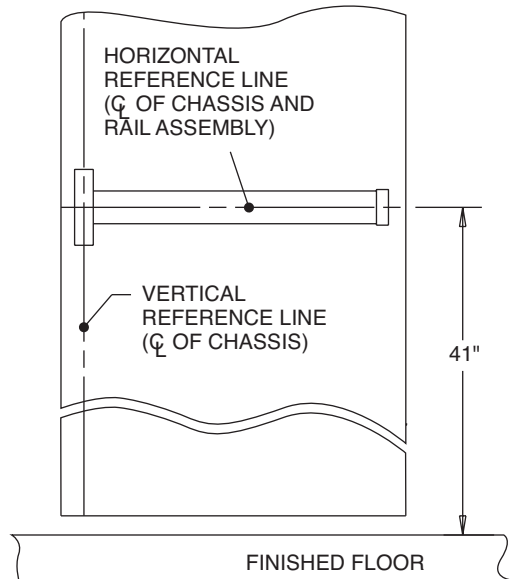
OUT

RIGHT HAND
REVERSE BEVEL

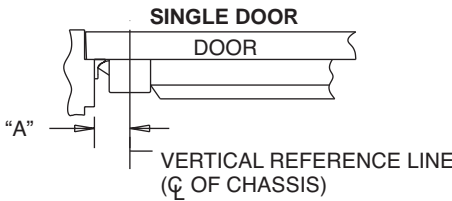
LEFT HAND
REVERSE BEVEL

FIRST

A MARK VERTICAL AND HORIZONTAL REFERENCE LINES ON THE DOOR



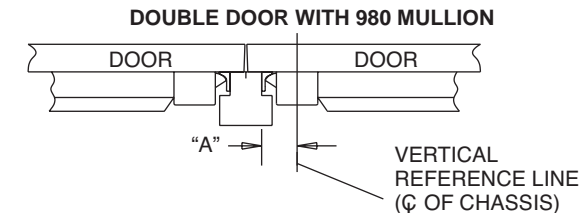
B IDENTIFY TYPE OF INSTALLATION TO DETERMINE LOCATION OF VERTICAL \varnothing



IF USE 641 STRIKE DIM. "A"=2-1/4"

IF USE 613 STRIKE DIM. "A"=1-3/4"

IF USE 642 STRIKE DIM. "A"=1-1/2"

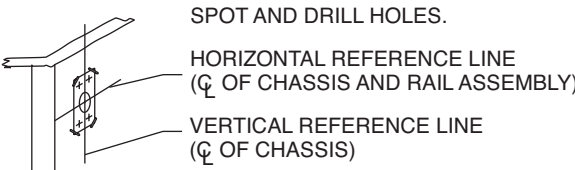


IF USE 641 STRIKE DIM. "A"=2 1/4"

SECOND

PREPARE DOOR

APPLY TEMPLATE ON THE DOOR ALONG REFERENCE
LINES AND TAPE IT WITH SUPPLIED TAPE.
IF DOOR ALREADY HAS ANSI DOOR PREP
(161 CUT-OUT), OR HAS 2 1/8" DIA HOLE AT 2 3/4"
BACKSET, POSITION TEMPLATE OVER EXISTING
HOLE & MARK FOR 4 CHASSIS MOUNTING HOLES.



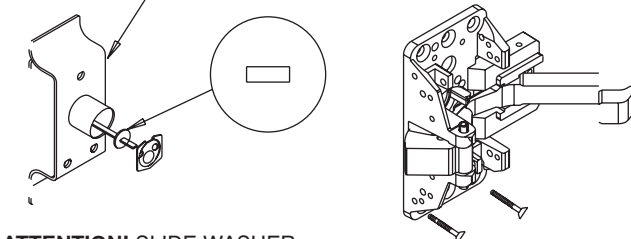
THIRD

APPLY HARDWARE

K-HTB APPLICATIONS

THRUBOLT OUTSIDE
TRIM (IF USED) TO
CHASSIS

WHEN CYLINDER IS USED -
IT MUST BE POSITIONED IN
THE MIDDLE OF TRIM, AS
ILLUSTRATED

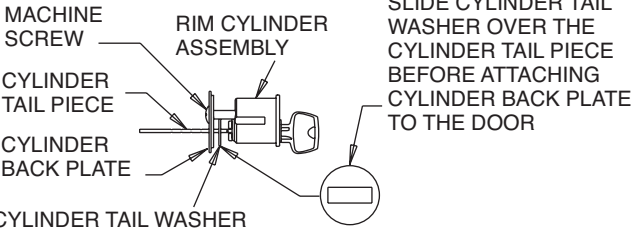


ATTENTION! SLIDE WASHER
OVER THE CYLINDER TAIL BEFORE
BACK PLATE INSTALLATION

FOR RIM CYLINDER ONLY APPLICATION

ATTENTION:

USE STANDARD SHIMS FOR
CENTER CHASSIS MOUNTING



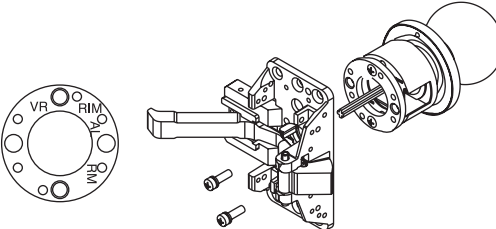
ATTENTION:

SLIDE CYLINDER TAIL
WASHER OVER THE
CYLINDER TAIL PIECE
BEFORE ATTACHING
CYLINDER BACK PLATE
TO THE DOOR

KNOB TRIM APPLICATIONS

TRIM IS NON HANDED.

1. SCREW THE ROSE DOWN ALL THE WAY.
2. WITH KEYHOLE FACING DOWN, POSITION TRIM
IN CROSS BORE HOLE, AND ATTACH TO CHASSIS
WITH (2) #10-32 FILLISTER HD. MACHINE SCREWS.



**FOR LEVER TRIM APPLICATIONS, SEE INSTRUCTION
SHEET A7274 PACKED WITH LEVER TRIM.

FOURTH

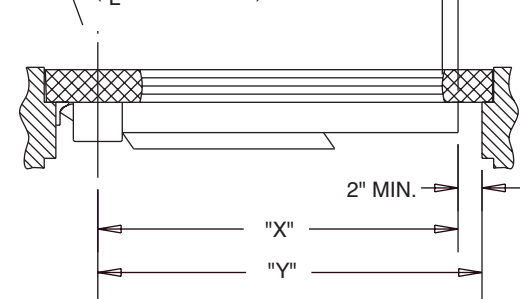
APPLY RAIL ASSEMBLY

- CHECK BOX LABEL. IF CUTTING IS NOT REQUIRED PROCEED TO STEP "B".
- IF CUTTING IS REQUIRED, CONTINUE WITH STEP "A".

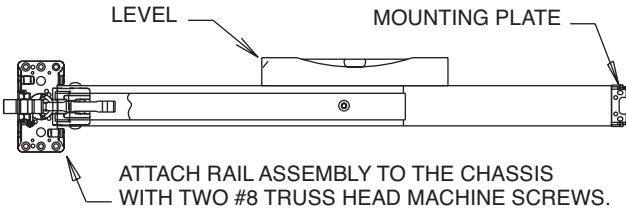
- A DETERMINE CUT OFF DIMENSION "X" BY SUBTRACTING 2" FROM DIMENSION "Y".
MARK CUT OFF POINT ON MOUNTING RAIL.

FOR DOORS WITH STILE RAIL MUST
OVERLAP STILE BY 1/2" MIN.

VERTICAL REFERENCE LINE
(\varnothing OF CHASSIS)



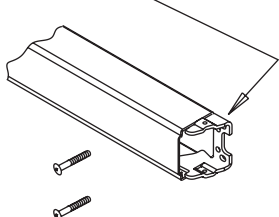
- B DEPRESS ARM INTO RAIL OPENING AND SLIDE RAIL ONTO CHASSIS.
LEVEL RAIL AND FASTEN MOUNTING PLATE



HOLD DOWN PUSH RAIL,
CUT OFF AND DEBURR.

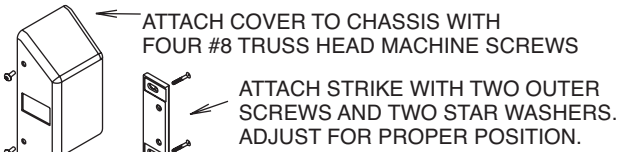
CAUTION:
DO NOT CUT CLOSER THAN
3-1/2" FROM THE CONNECTING
ARM PIVOT IN THE PUSH RAIL

PLACE MOUNTING PLATE TIGHT
AGAINST RAIL AND ATTACH IT TO
THE DOOR WITH #10 ROUND
HEAD SCREWS



FIFTH

APPLY COVERS AND STRIKE



ATTACH END CAP TO
MOUNTING PLATE
WITH TWO COVER
SCREWS



FOR EXIT ONLY APPLICATIONS

USING RETAINING RING
PLIERS (NOT SHOWN) OR
SCREWDRIVER TO REMOVE
RETAINING RING FROM THE
CAM AND CAM FROM THE
CENTER CHASSIS ASSEMBLY
FOR FLUSH MOUNTING.

ATTACH CHASSIS
WITH FOUR #10
WOOD OR
MACHINE SCREWS

SCREWDRIVER

RETAINING RING

CENTER CASE
CHASSIS
ASSEMBLY

CAM

INSTRUCTIONS FOR INSTALLING
12-3828 SERIES RIM FIRE EXIT DEVICE

Patent pending and/or patent www.assaabloydss.com/patents

SARGENT®
ASSA ABLOY

CAUTION!

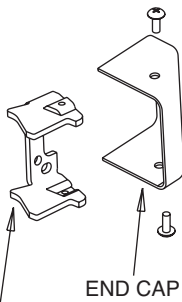
BEFORE STARTING:
- INSTALL MULLION IF USED;
- DOOR SHOULD BE FITTED AND HUNG;
- CHECK BOX LABEL FOR SIZE OF EXIT DEVICE.

AVAILABLE STOCK LENGTHS:
LENGTH "E" - 32" DOOR, NO CUT REQUIRED.
CAN BE CUT TO FIT DOORS DOWN TO 24" WIDE.
LENGTH "F" - 36" DOOR, NO CUT REQUIRED.
CAN BE CUT TO FIT DOORS DOWN TO 30" WIDE.
LENGTH "G" - 48" DOOR, NO CUT REQUIRED.
CAN BE CUT TO FIT DOORS DOWN TO 36" WIDE.

- IMPORTANT:**
1. FOR RIM CYLINDER APPLICATIONS:
INSTALL CYLINDER TAIL WASHER TO CYLINDER
TAIL PIECE. SEE STEP THREE FOR DETAILS.
 2. CLEAR AWAY ANY RAISED PROJECTIONS
TO ALLOW EXIT DEVICE TO REST
ON FLAT SURFACE
OF THE DOOR.

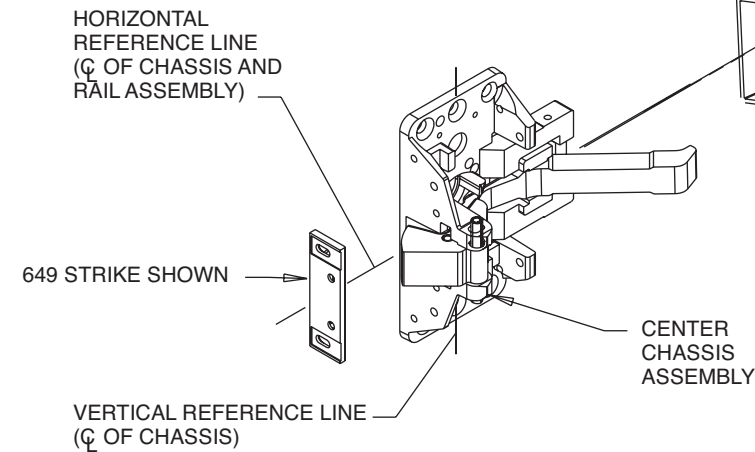


CYLINDER
TAIL WASHER



END CAP

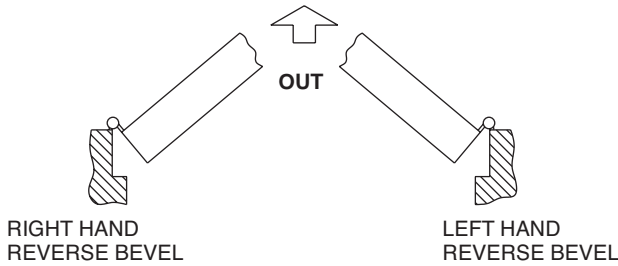
MOUNTING BRACKET



RAIL ASSEMBLY

CENTER
CHASSIS
ASSEMBLY

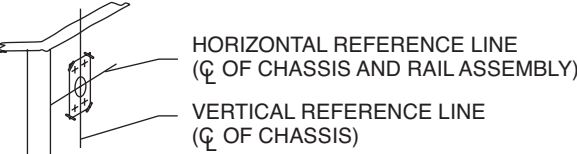
THIS EXIT DEVICE IS NON-HANDED



SECOND PREPARE DOOR

APPLY TEMPLATE ON THE DOOR ALONG REFERENCE
LINES AND TAPE IT WITH SUPPLIED TAPE.
IF DOOR ALREADY HAS ANSI DOOR PREP
(161 CUT-OUT), OR HAS 2-1/8" DIA HOLE AT 2-3/4"
BACKSET, POSITION TEMPLATE OVER EXISTING
HOLE & MARK FOR 4 CHASSIS MOUNTING HOLES.

SPOT AND DRILL HOLES.

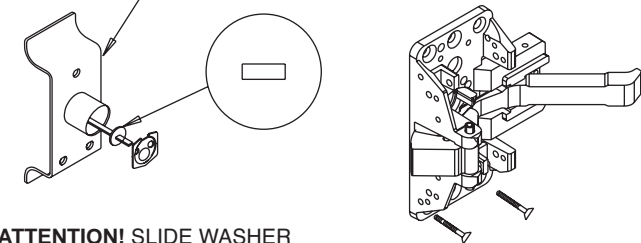


THIRD APPLY HARDWARE

K-HTB APPLICATIONS

THRUBOLT OUTSIDE
TRIM (IF USED) TO
CHASSIS

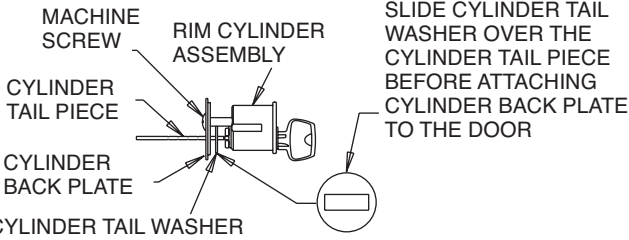
WHEN CYLINDER IS USED -
IT MUST BE POSITIONED IN
THE MIDDLE OF TRIM, AS
ILLUSTRATED



ATTENTION! SLIDE WASHER
OVER THE CYLINDER TAIL BEFORE
BACK PLATE INSTALLATION

FOR RIM CYLINDER ONLY APPLICATION

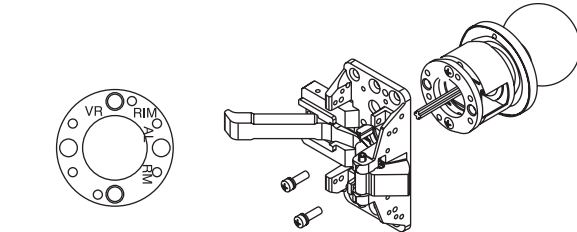
ATTENTION:
USE STANDARD SHIMS FOR
CENTER CHASSIS MOUNTING



ATTENTION:
SLIDE CYLINDER TAIL
WASHER OVER THE
CYLINDER TAIL PIECE
BEFORE ATTACHING
CYLINDER BACK PLATE
TO THE DOOR

KNOB TRIM APPLICATIONS

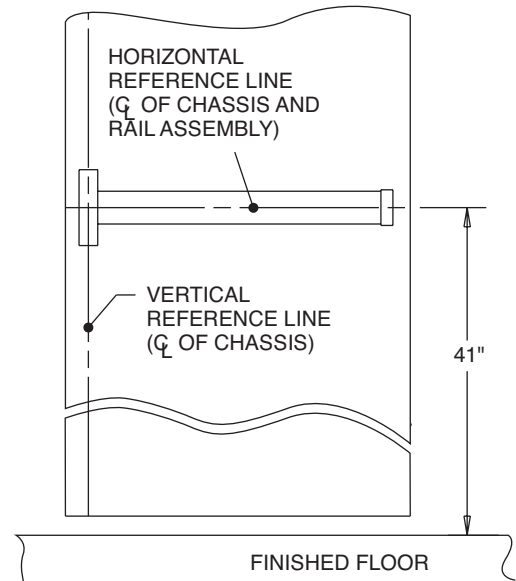
- TRIM IS NON HANDED.
1. SCREW THE ROSE DOWN ALL THE WAY.
 2. WITH KEYHOLE FACING DOWN, POSITION TRIM
IN CROSS BORE HOLE, AND ATTACH TO CHASSIS
WITH (2) #10-32 FILLISTER HD. MACHINE SCREWS.



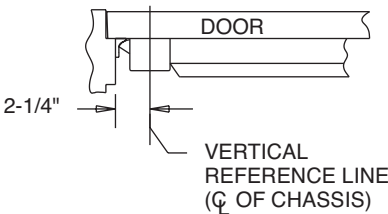
**FOR LEVER TRIM APPLICATIONS, SEE INSTRUCTION
SHEET A7274 PACKED WITH LEVER TRIM.

FIRST A MARK VERTICAL AND HORIZONTAL
REFERENCE LINES ON THE DOOR

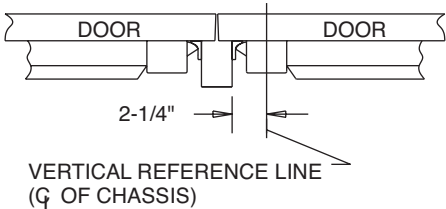
B IDENTIFY TYPE OF INSTALLATION TO
DETERMINE LOCATION OF VERTICAL C



SINGLE DOOR



DOUBLE DOOR WITH 12-980 MULLION



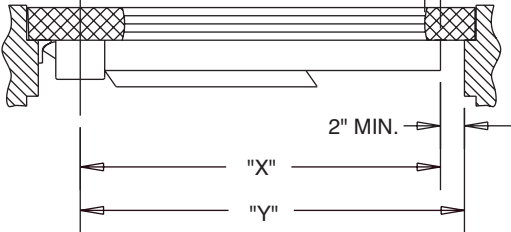
FOURTH APPLY RAIL ASSEMBLY

- CHECK BOX LABEL. IF CUTTING IS NOT REQUIRED PROCEED TO STEP "B".
- IF CUTTING IS REQUIRED, CONTINUE WITH STEP "A".

- A DETERMINE CUT OFF DIMENSION "X" BY SUBTRACTING 2" FROM DIMENSION "Y".
MARK CUT OFF POINT ON MOUNTING RAIL.

FOR DOORS WITH STILE RAIL
MUST OVERLAP STILE BY 1/2" MIN.

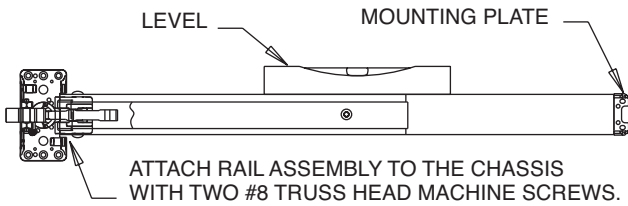
VERTICAL REFERENCE LINE
(C OF CHASSIS)



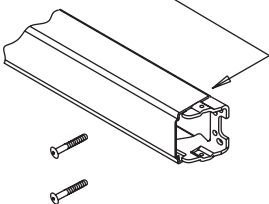
HOLD DOWN PUSH RAIL,
CUT OFF AND DEBURR.

CAUTION:
DO NOT CUT CLOSER THAN
3-1/2" FROM THE CONNECTING
ARM PIVOT IN THE PUSH RAIL

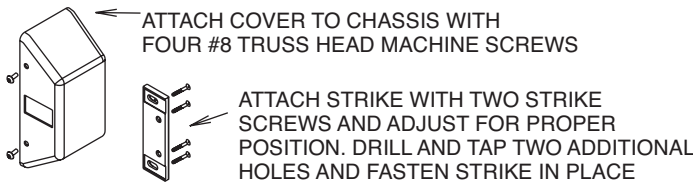
- B DEPRESS ARM INTO RAIL OPENING AND SLIDE RAIL ONTO CHASSIS.
LEVEL RAIL AND FASTEN MOUNTING PLATE



PLACE MOUNTING PLATE TIGHT
AGAINST RAIL AND ATTACH IT TO
THE DOOR WITH #10 ROUND
HEAD SCREWS



FIFTH APPLY COVERS AND STRIKE

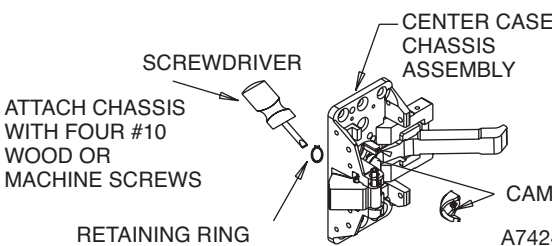


ATTACH END CAP TO
MOUNTING PLATE
WITH TWO COVER
SCREWS



FOR EXIT ONLY APPLICATIONS

USING RETAINING RING
PLIERS (NOT SHOWN) OR
SCREWDRIVER TO REMOVE
RETAINING RING FROM THE
CAM AND CAM FROM THE
CENTER CHASSIS ASSEMBLY
FOR FLUSH MOUNTING.



Copyright © 2012, 2016, Sargent Manufacturing Company, an ASSA ABLOY Group company. All rights reserved. Reproduction in whole or in part without the express written permission of Sargent Manufacturing Company is prohibited.

ASSA ABLOY, the global leader in door opening solutions

A7424E