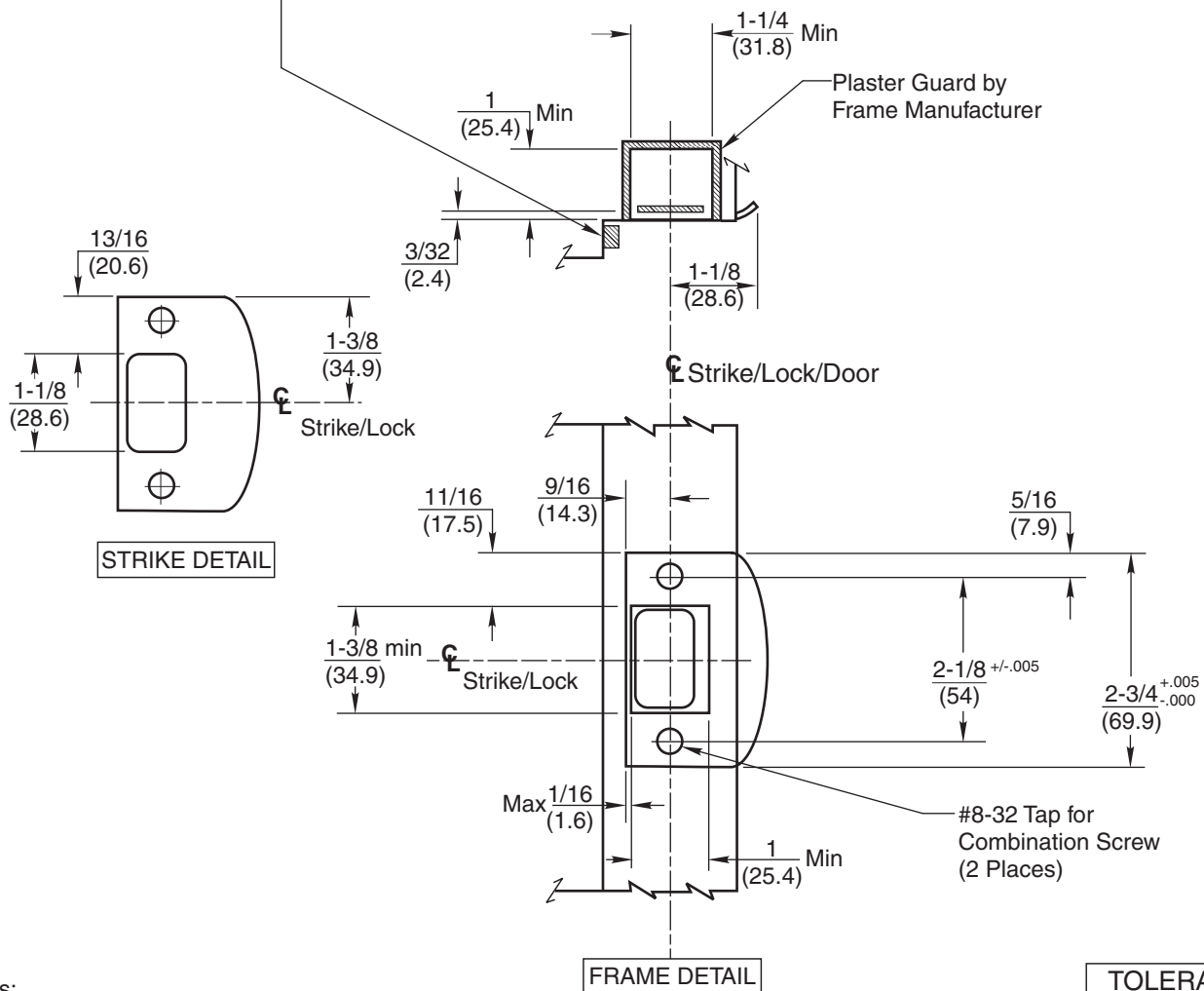


# TEMPLATE CROSS REFERENCE

DESCRIPTION	TEMPLATE
CLX3300 Series Cylindrical Lever Lock	T31253
CL3500 Series Cylindrical Lever Lock	T31001
CK4400 Series Cylindrical Knob Lock	T30400

⑤

**CAUTION: DOOR AND FRAME MANUFACTURERS**  
When door gasketing or silencers are used, proper allowances must be made for strike location to maintain a common centerline with lock and door as shown so that bolt will freely enter strike.



Notes:

Dimensions given in inches and (mm).

## TOLERANCES

INCHES	(mm)
.005	(.127)
.015	(.381)

## RESPONSIBILITY

DOOR AND FRAME MANUFACTURERS ARE RESPONSIBLE FOR PROVIDING ADEQUATE CONSTRUCTION OR REINFORCEMENTS FOR PROPER INSTALLATION OF HARDWARE SHOWN. ALL ARCHITECTURAL BUILDERS HARDWARE MUST BE INSTALLED ON PROPERLY REINFORCED DOORS AND FRAMES, REGARDLESS OF TYPE, MATERIAL, OR METHOD OF CONSTRUCTION.

**SF118**  
**Full Lip Strike**  
  
607F76

**Corbin**  
**Russwin**  
**ASSA ABLOY**

www.corbinrusswin.com

SUPERSEDES	T30648-4	DO NOT SCALE DRAWING
TEMPLATE NUMBER	T30648-5	SHEET 1 of 1
		DATE 03/21

Experience a safer and more open world

Copyright © 1999 - 2021, ASSA ABLOY Access and Egress Hardware Group, Inc. All rights reserved. Reproduction in whole or in part without the express written permission of ASSA ABLOY Access and Egress Hardware Group, Inc. is prohibited.