

Motor Gearbox



**9540-3454
Motor Gearbox**

- Senior swing
- Handed
- Driving mechanism for operator
- Provides maximum 15 lbs opening force

Mount Brackets



**9540-275
Mounting Bracket**

- Motor gearbox mounting bracket for 2-3/4" offset pivot or butt hinge installations
- Front bracket



**9540-3018
Rear Mounting Bracket**

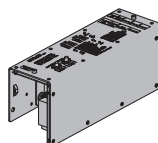
- Motor gearbox mounting bracket
- Rear bracket



**9540-334-1
Angled Bracket**

- Mounting bracket for surface applications (includes 2 mounting brackets)

Control Box



**9540-3462
Control Box**

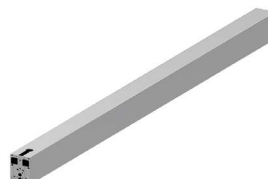
- Electronic controlling device for Senior Swing

Headers



**9540-3572HL
Header**

- Single door, single operator
- Specify length 33" to 48" maximum
- Standard



**9540-3572DD
Header**

- Double door, single operator
- Specify length 49" to 98" maximum
- Standard

End Caps



**9540-334
Header End Caps**

- With openings for wiring



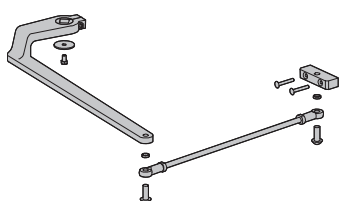
**9540-334-2
End Dress Plate**

- Metal finish end cap

9540 Series Senior Swing

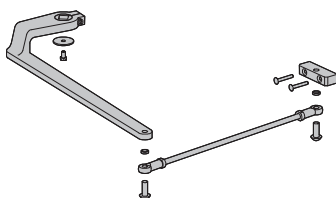
Accessories

Arms



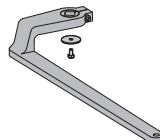
9540-3077 Regular Arm Assembly

- Handed
- Includes 77 main arm assembly and 79 linkage assembly



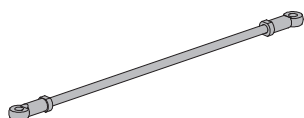
9540-3077L Regular Long Arm Assembly

- Handed
- Includes 77 main arm assembly and 79LR linkage assembly



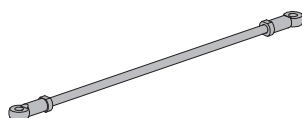
9540-77 Main Arm

- Handed
- Attaches to motor gearbox



9540-79 Linkage Assembly - 15"

- Threaded rod attaches to door
- Extends from main arm



9540-79LR Linkage Assembly - 32"

- Threaded long rod attaches to door
- Extends from main arm.
- Used for reveal 10" to 20"

Installation Accessories



9540-11A Spindle Plate

- Hides bottom of motor gearbox
- Completes header box
- Cutout allows for motor gearbox shaft
- For 2-3/4" offset pivot or butt hinge installations



9540-12 Filler Plate Blank

- Completes length of header box (specify length)



9540-18 Mounting Plate

- For standard hollow metal door frames
- Specify length 55-1/2" to 101-1/2" maximum when using angle brackets
- Specify length 52" to 98" maximum when using dress plates
- Optional

NOTE: The length of a universal 18 plate will need to be ordered 3-1/2" longer than the supplied header when using angle brackets.