

# 5300 Series



The 5300 Series Closers offer a compact design for a variety of applications. They are constructed of aluminum alloy to withstand the use and abuse you come to expect of Hager Companies Grade 1 products. The 5300 Series closers provide the flexibility needed to meet the many demands of both commercial and institutional applications, including the ADA barrier-free accessibility requirements. The sizing is adjustable from size 1 through size 6. These design features make this closer the ideal choice for doors with a maximum weight of 250 lbs.



## 5300 SERIES - HOW TO ORDER

5300	TRK	1-6	DBZ	LA	FC	RH	SX1G	DLY
<b>Mount</b> MLT - Multi-Mount PAR - Parallel Arm Mount <b>TRK - Track Arm Mount</b>		<b>Finish</b> ALM - Sprayed Aluminum BRZ - Sprayed Bronze DBZ - Sprayed Dark Bronze GOL - Sprayed Gold BLK - Sprayed Black*		<b>Covers</b> FC - Full Cover PC - Pinion Cap		<b>Fastener Options</b> SX1G - Sex Bolts for 1-3/8" Door SX1N - Sex Bolts for 1-3/4" Door SX2 - Sex Bolts for 2" Door SX2D - Sex Bolts for 2-1/4" Door		
<b>Product Group</b> 5300 - Aluminum, Grade 1		<b>Size</b> 1-6 Adjustable		<b>Handing</b> RH - Right Hand LH - Left Hand <b>(Specifying when ordering 5912)</b>		<b>Miscellaneous</b> DLY - Delayed Action		
<b>Arm Options</b> HD - Extra Heavy Duty Arm HO - Hold Open Arm HDHO - Extra Heavy Duty Hold Open Arm LA - Long Arm HDHOS - Extra Heavy Duty Hold Open Stop Arm HDHOCS - Extra Heavy Duty Hold Open Cushion Stop Arm HDS - Extra Heavy Duty Stop Arm HDCS - Extra Heavy Duty Cushion Stop Arm HOTA - Hold Open/Stop Track Arm NHOTA - Non Hold Open Stop Track Arm								

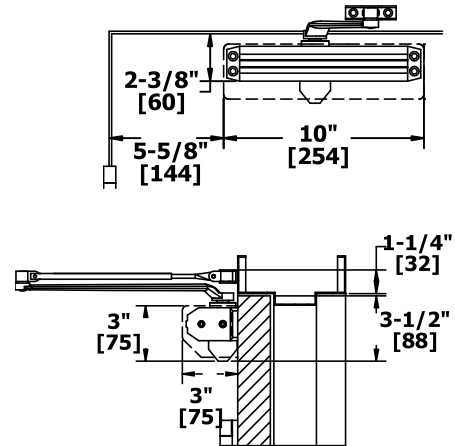
Example of how to order: 5300P14ALMHDHOCS

\*Extended lead times for flat black finish and minimum order quantities may apply.

## 5300 SERIES - APPLICATIONS

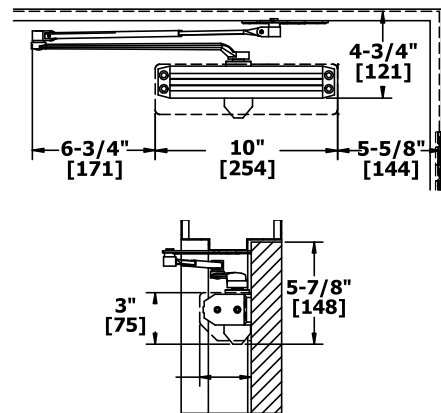
### REGULAR ARM MOUNT (PULL SIDE)

Opening:	Templating allows up to 180°
Hold Open:	Hold open points 90° up to 180° with hold open arm
Frame Face:	1-3/8" (35 mm) minimum
Ceiling Clearance:	<ul style="list-style-type: none"> <li>• 1-5/8" (41 mm) minimum</li> <li>• 1-5/8" (41 mm) minimum for hold open arm</li> </ul>
Top Rail:	2-1/2" (64 mm) minimum with drop plate, 5915
Top Rail Clearance:	4-1/4" (108 mm) minimum from the top of the door



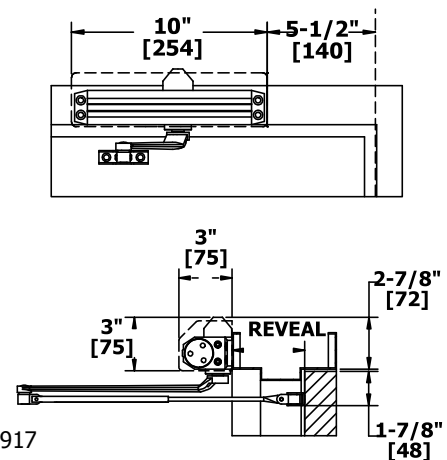
### PARALLEL ARM MOUNT (PUSH SIDE)

Opening:	Templating allows up to 180°
Hold Open:	Hold open points 90° up to 180° with hold open
Top Rail:	<ul style="list-style-type: none"> <li>• Standard hollow metal 5/8" frame stop</li> <li>• 4-3/4" (121 mm) minimum</li> <li>• 4" (102 mm) minimum with hold open</li> <li>• 3-1/8" (79 mm) minimum with plate</li> <li>• 2-1/8" (54 mm) minimum with hold open and plate</li> </ul>
Top Rail Clearance:	5-3/4" (146 mm) minimum from the top of the door



### TOP JAMB MOUNT (PUSH SIDE)

Opening:	Templating allows up to 180°
Hold Open:	Hold open points 90° up to 180° with hold open
Frame Face:	1-3/4" (45 mm) minimum
Ceiling Clearance:	<ul style="list-style-type: none"> <li>• 2-3/4" (70 mm) minimum</li> <li>• 1-3/4" (44 mm) minimum with drop plate, 5918</li> </ul>
Top Rail:	1-7/8" (48 mm) minimum
Top Rail Clearance:	<ul style="list-style-type: none"> <li>• 2-1/8" (54 mm) minimum</li> <li>• 2-3/4" (70 mm) minimum with drop plate, 5917</li> <li>• 2-1/4" (57 mm) minimum for hold open with drop plate, 5917</li> <li>• 3-5/8" (92 mm) minimum with drop plate, 5915</li> </ul>



## 5300 SERIES - GRADE 1 HEAVY DUTY SURFACE DOOR CLOSER

### WARRANTY

Lifetime warranty - 250 lbs. maximum door weight

### FEATURES

- Ideal for schools, hospitals, and other high-use environments
- Standard package contains 5301 closer body, 5302 closer cover, 5902 pinion cap, 5303 main arm assembly, 5304 standard screw pack, 5900 parallel arm bracket, and 5902 SNB screw pack for 1-3/4" (44 mm) door

### Certification:

- BHMA Certified ANSI A156.4, adjustable sizes 1 to 6
- ADA Compliant ANSI A117.1 Accessibility Code
- UL/cUL Listed for up to 3 hours
- UL10C Positive Pressure Rated
- UL10B Neutral Pressure Rated

### Covers:

Full plastic cover and pinion cap - Standard

### Closer Body:

- Aluminum alloy
- The recommended temperature for prolonged use is between -40° F (-42° C) & 150° F (66° C)

### Springs:

Double heat treated steel, tempered springs

### Valves:

- Adjustable latching and sweep speed valves
- Adjustable backcheck valve - Standard
- Delayed action valve - Optional
- Staked valves - Standard

### Handing:

Non-handed

### Arms & Brackets:

- Tri-Pack: Regular, Parallel Arm, and Top Jamb Mount - Standard
- 15% power adjustment in standard arm for regular and top jamb mount

### SPECIFICATIONS

#### Door Thickness:

- 1-3/4" (44 mm) - Standard
- 1-3/8" - 2-1/4" (36 mm - 57 mm) thick door - Optional

#### Fasteners:

- Self-reaming, self-tapping wood and machine screws
- Sex nuts and bolts

#### Notes:

- Full rack and pinion operation
- Precision machined, heat treated steel piston
- Triple heat treated steel spindle
- Special templates available upon request by contacting Hager Companies Customer Service

### FINISHES

- ALM, BLK, BRZ, DBZ, GOL
- Rust inhibiting primer - Standard



## 5300 SERIES - ARMS



### 5303

#### Main Arm

- Non-handed
- Forged steel
- Mounts regular, top jamb, or parallel arm mount
- Add 5900 bracket for parallel arm mount



### 5906

#### Extra Heavy Duty Hold Open Stop Arm

- Non-handed parallel arm
- Forged steel
- Plunger hold open function
- Auxiliary stop in soffit shoe
- For use with 5200 and 5300 Series closers
- Not for use on fire-rated doors



### 5907

#### Extra Heavy Duty Stop Arm

- Non-handed parallel arm
- For use in abusive environments
- Auxiliary stop in soffit shoe
- For use with 5200 and 5300 Series closers



### 5910

#### Hold Open Arm

- Non-handed
- Forged steel
- Mounts pull side or top jamb with shallow reveal
- Friction hold open function
- Add 5914 Rev1 bracket for parallel arm mount



#### Track Arm

- Non-handed
- Extruded aluminum track
- Steel arm

#### Functions:

#### Non Hold Open Stop Arms

- 2-659-0141 - ALM
- 2-659-0328 - BLK
- 2-659-0140 - BRZ
- 2-659-0139 - DBZ
- 2-659-0138 - GOL



### 5911

#### Extra Heavy Duty Arm Assembly

- Non-handed parallel arm
- Forged steel
- For use with 5200 and 5300 Series closers



### 5912

#### Extra Heavy Duty Hold Open Arm Assembly

- Handed parallel arm (specify handing when ordering)
- Forged steel
- Provides friction hold open function
- Adjustable at the shoe
- For use with 5200 and 5300 Series closers
- Not for use on fire-rated doors



### 5956

#### Extra Heavy Duty Hold Open Cushion Stop Arm

- Non-handed parallel arm
- Forged steel
- Contains 5906 arm and 5950 spring cushion arm
- Plunger hold open
- For use with 5200 and 5300 Series closers
- Not for use on fire-rated doors



### 5957

#### Extra Heavy Duty Cushion Stop Arm

- Non-handed parallel arm
- Forged steel
- Contains 5907 arm and 5950 spring cushion
- For use with 5200 and 5300 Series closers

#### Hold Open Stop Arms

- 2-659-0350 - ALM
- 2-659-0329 - BLK
- 2-659-0351 - BRZ
- 2-659-0352 - DBZ
- 2-659-0353 - GOL

## 5300 SERIES - ACCESSORIES



### 5301

#### Closer Body Only

- Aluminum alloy
- Heat treated steel spindle and piston
- Full rack and pinion operation



### 5302

#### Full Plastic Cover

- Cover projects 2-3/16" (56 mm) from door face
- High impact non-corrosive full cover - Standard
- Secured by two machine screws
- Available in plastic only



### 5900

#### Parallel Arm Bracket

- Used to convert regular or top jamb arms to parallel arm application
- For use with 5300 and 5400 Series closer arms
- Includes screw pack



### 5901

#### Pinion Cap

- High-impact, non-corrosive
- Supplied standard in 5300 and 5400 Series closers
- Fits over the pinion and extends 1" (25 mm)



### 5908

#### Long Rod and Shoe

- Use for reveals greater than 4" (102 mm) and up to 8" (203 mm)
- Non-handed
- Cast steel
- Use for top jamb application
- For use with 5300 and 5400 Series closer arms



### 5913

#### Blade Stop Spacer

- Required to lower parallel arm shoe to clear 1/2" (13 mm) blade stop of aluminum frames
- For use with 5300 and 5400 Series closer arms
- Includes screw pack



### 5936

#### Extra Clearance Parallel Arm Bracket

- Allows for up to 2" (13 mm) of clearance to mount additional hardware such as overhead door stops and holders
- Provides needed clearance not achieved with a standard soffit plate
- Includes screw pack



### 5950

#### Spring Cushion

- Non-handed
- Mounts to soffit shoe of 5125, 5961, 5906 and 5907 arms
- For use with extra heavy duty hold open and stop arms for abusive applications



### 5914

#### Hold Open Parallel Arm Bracket

- Supplied with all standard hold open arms
- For use with 5200 and 5300 Series closers only
- Includes screw pack



### 5915

#### Drop Plate - Narrow Rail Overhead Holder

- For use when an overhead door holder prevents normal top jamb mounting
- For use when a narrow rail prevents the closer from being mounted directly to the door
- For use with parallel arm and no cover
- For use when low ceiling clearance prevents normal top jamb mounting
- Includes screw pack
- Plate requires 3" (76mm) minimum top rail



### 5916

#### Drop Plate - Narrow Rail Parallel Arm

- For use when a narrow rail prevents the closer from being mounted directly to the door
- For use with parallel arm and full plastic cover
- Includes screw pack
- Plate requires 3" (76mm) minimum top rail

## 5300 SERIES - ACCESSORIES

## SCREW PACKS



### 5917

#### Drop Plate - Top Jamb, Low Clearance

- For use with no cover
- For use when ceiling clearance is between 1-3/4" (44 mm) and 2-5/8" (67 mm)
- For use when an overhead door holder prevents normal top jamb mounting
- Includes screw pack



### 5304

#### Screw Pack - Standard

- Self-drilling wood screws
- Self-drilling machine screws
- For 5300 Series closer only



### 5902

#### SNB Screw Pack - Standard

- Sex nuts and bolts for 1-3/4" (44 mm) doors
- Machine screws
- For use with 5200, 5300, 5400 Series closers only



### 5903

#### SNB Screw Pack - Optional

- Sex nuts and bolts for 1-3/8" (35 mm) doors
- Machine screws
- For use with 5200, 5300, 5400 Series closers only



### 5904

#### SNB Screw Pack - Optional

- Sex nuts and bolts for 2" (51 mm) doors
- Machine screws
- For use with 5200, 5300, 5400 Series closers only



### 5905

#### SNB Screw Pack - Optional

- Sex nuts and bolts for 2-1/4" (56 mm) doors
- Machine screws
- For use with 5200, 5300, 5400 Series closers only