



Multi-feature closers with compact design,
ideal for application on interior doors

Norton®

ASSA ABLOY

Experience a safer
and more open world

1700
S E R I E S

DOOR CLOSER

CATALOG

INTRODUCTION

Norton 1700 Series Door Closers offer a compact design that is ideal for interior door applications. This narrow-style closer has distinctive lines that harmonize with most decors. The 1700 Series offers an economical alternative for those installations where a more heavy-duty closer is not necessary.

STANDARD FEATURES

- » Tri-Style® packaging: closer tri-packed for regular arm, top jamb or parallel arm installation
- » Non-handed
- » Size 3 or 4 depending on installation
- » Aluminum alloy shell
- » Rack & pinion operation
- » Adjustable closing speed
- » Adjustable latch speed
- » Adjustable backcheck cushioning: independent regulating valve
- » Non-hold open
- » Slim line cover
- » Auxiliary stop required (by others)
- » Interior doors

OPTIONAL FEATURES

- » Hold open

CERTIFICATIONS



- » ANSI/BHMA A156.4 Grade 3 certified 
- » UL / cUL listed for use on fire rated doors 
- » UL10C listed for positive pressure fire test



TABLE OF CONTENTS

| | |
|--|-----|
| Introduction, Features, Certifications | 2 |
| Explanation of Features, Specifications..... | 3 |
| Standard Applications..... | 4-6 |
| Accessories | 7 |
| How to Order | 8 |

1700 SERIES

LIGHT COMMERCIAL DOOR CLOSER

EXPLANATION OF FEATURES

Door Plates

For narrow top rails, narrow frame faces, and top jamb hold open installations. Specify finish when ordering separately.

Molded Slim Line Cover

Molded of high-impact U.L. Listed material, cover encloses closer body and mounting screws.

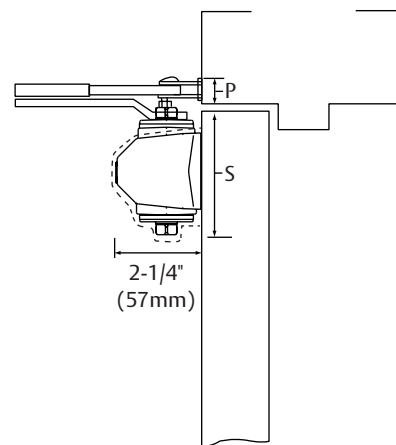
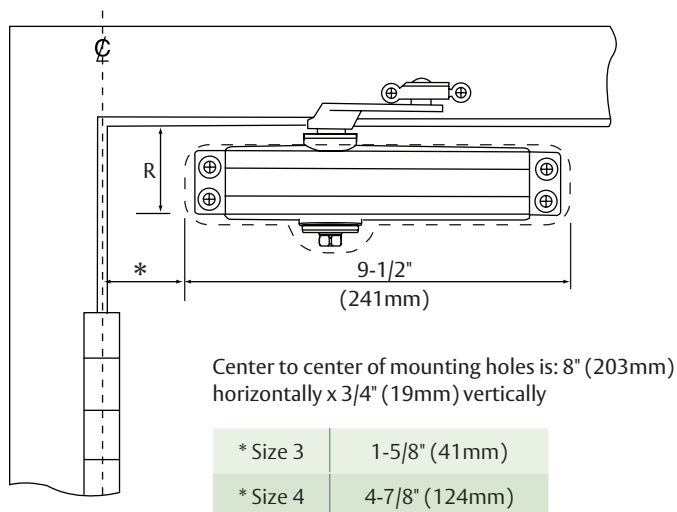
SPECIFICATIONS

Closers for interior doors shall be full rack-and-pinion type with cast aluminum alloy shell. Closer shall be non-handed to permit installation on either hand of door. Closer to be supplied with brackets to allow regular arm, parallel arm or top jamb mounting. Closer to have noncritical valves to independently regulate sweep speed (and) latch speed (and backcheck cushioning.) (Closer shall be enclosed in a molded slim line cover.) Closer to be Norton 1700 Series.

REGULAR ARM INSTALLATION



Closer mounts on door;
Arm bracket on frame face.



| R Minimum Top Rail | | | | S Minimum Top Rail Clearance | | P Minimum Ceiling Clearance Without Drop Plate | |
|-----------------------|-----------|-----------------------|-----------|---------------------------------|-----------|---|---------------|
| Without Drop Plate | | With N1756 Drop Plate | | | | | |
| Non-Hold Open | Hold Open | Non-Hold Open | Hold Open | Non-Hold Open | Hold Open | Non-Hold Open | Hold Open |
| 2" (51mm) | | 1-1/4" (32mm) | | 2-3/4" (70mm) | | 1" (25mm) | 1-3/8" (35mm) |

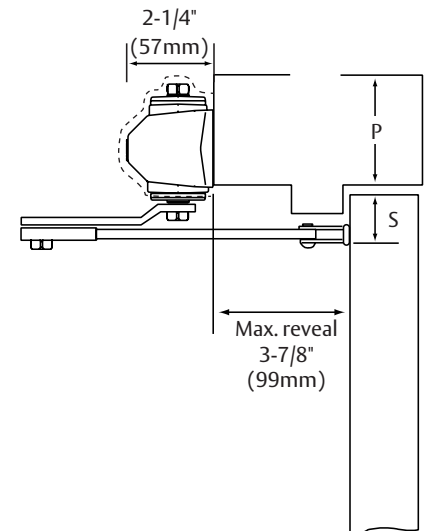
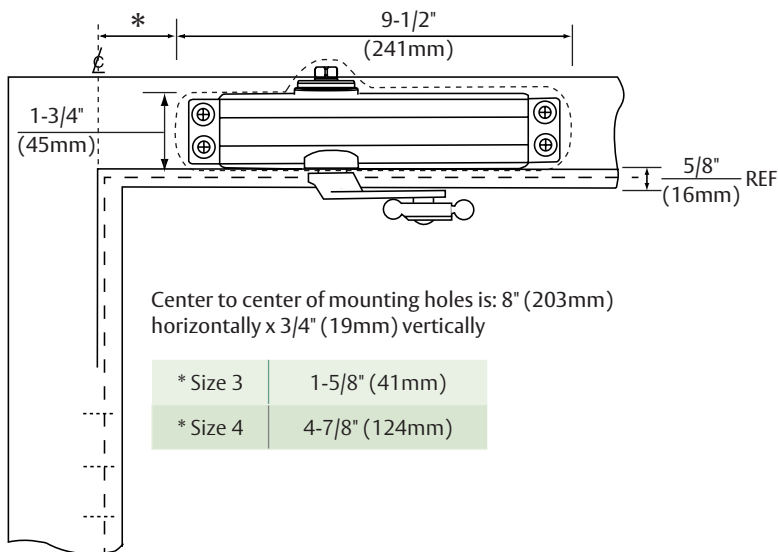
Maximum door swing = 180°

1700 SERIES LIGHT COMMERCIAL DOOR CLOSER

TOP JAMB INSTALLATION



Closer mounts on push side of frame;
arm shoe mounts to door.



| S Minimum Top Rail 5/8" (16mm) Frame Stop | | | P Minimum Ceiling Clearance | | | |
|---|-----------------------|---------------|--------------------------------|-----------|-----------------------|-----------|
| Without Drop Plate | With N1757 Drop Plate | | Without Drop Plate | | With N1757 Drop Plate | |
| Non-Hold Open | Non-Hold Open | Hold Open | Non-Hold Open | Hold Open | Non-Hold Open | Hold Open |
| 1-5/16" (33mm) | 2-1/4" (57mm) | 2-5/8" (67mm) | 2-1/2" (64mm) | Required* | 1-3/4" (44mm) | |

***Hold open (top jamb) application requires use of N1757 drop plate**

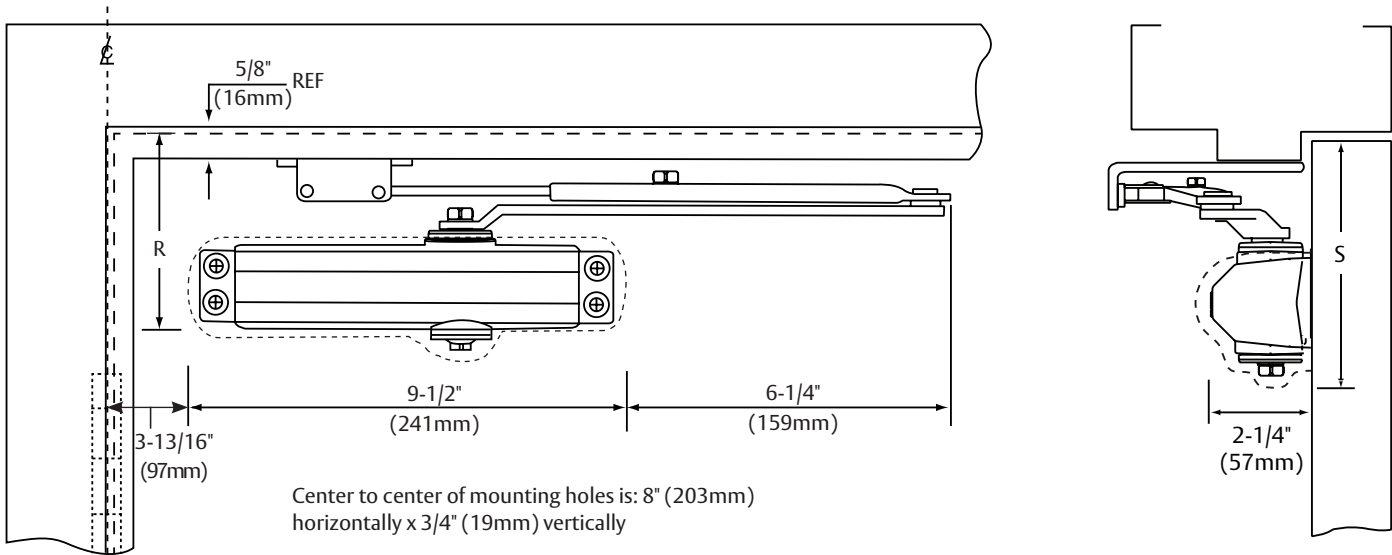
Maximum door swing

Size 3 : 180°; reveals 0" to 3"
: 160°; reveals 3" to 3-7/8"
Size 4 : 140°; reveals 0" to 3-7/8"

PARALLEL ARM INSTALLATION



Closer Mounts on Door;
Bracket on frame soffit.



| R Minimum Top Rail 5/8" (16mm) Frame Stop | | | | S Minimum Top Rail Clearance | |
|---|-----------|--------------------------|-----------|------------------------------------|-----------|
| Without Drop Plate | | With N1758 Drop Plate | | | |
| Non-Hold Open | Hold Open | Non-Hold Open | Hold Open | Non-Hold Open | Hold Open |
| 4-1/2" (114mm) | | 2-7/8" (73mm) | | 5" (127mm) | |

Maximum door swing = 180°

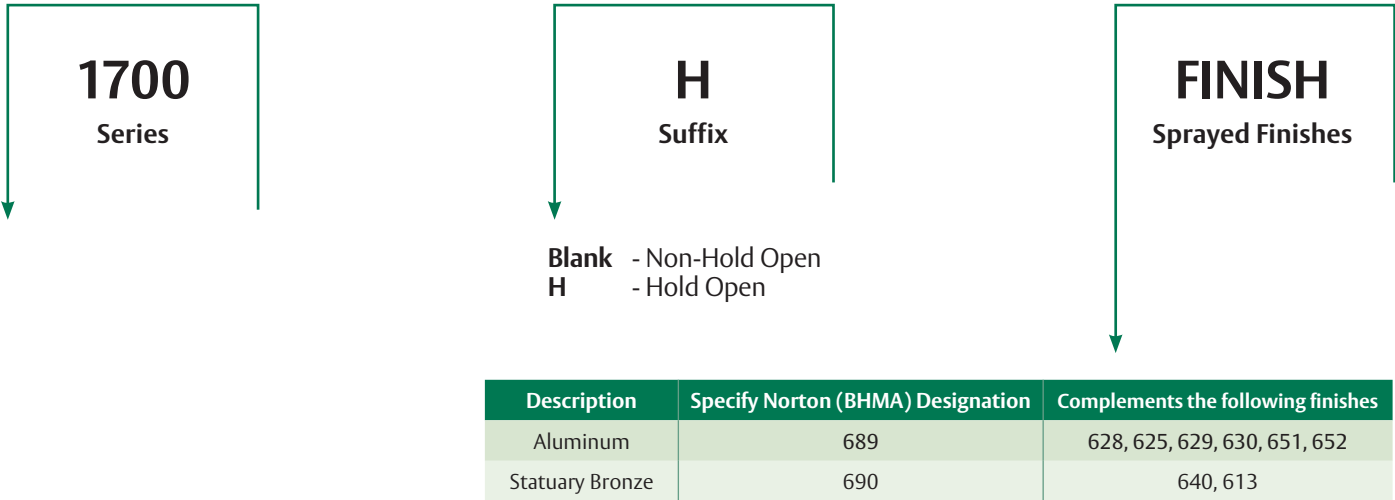
1700 SERIES

LIGHT COMMERCIAL DOOR CLOSER

ACCESSORIES

| Part Number | Description |
|-------------|---------------------------|
| N1756 | Drop Plate (Regular Arm) |
| N1757 | Drop Plate (Top Jamb) |
| N1758 | Drop Plate (Parallel Arm) |

HOW TO ORDER



- NOTES:
- » Door closer warranty becomes void if the closer is installed on the exterior side of a door in the exterior wall of a building.
 - » It is strongly recommended, and may be required on fire door assemblies, that doors having a door closer be hung on ball-bearing or anti-friction hinges or pivots. Consult local authority having jurisdiction.
 - » Failure to use fasteners supplied with closer may void factory warranty.
 - » Fasteners for fire/smoke door assemblies must conform to NFPA 80. In some applications additional fasteners may be mandated by NFPA 80 that are not shipped with standard Norton product, such as sleeve-nuts/sex-nuts or thru bolts and grommet nuts.
 - » Information provided is based on 1-3/4" (44mm) x 7' (2.13m) standard weight doors swinging to 110°. Other conditions (such as door height or weight; or wind/draft conditions) may require adjustment of spring setting, selection of a larger size closer or different closer.

The ASSA ABLOY Group is the global leader in access solutions. Every day, we help billions of people experience a more open world.

ASSA ABLOY Opening Solutions leads the development within door openings and products for access solutions in homes, businesses and institutions. Our offering includes doors, frames, door and window hardware, locks, perimeter fencing, access control and service.

Since 1880, Norton door controls have been an integral part of schools, hospitals and businesses around the globe. When you need products and people that perform at the highest level, rely on Norton – From Open to Close.

Norton Door Controls | www.nortondoorcontrols.com
3000 Highway 74 East | Monroe, NC 28112 | 1.877.974.2255

ASSA ABLOY Opening Solutions
Door Security Solutions Canada | www.assaabloy.ca
160 Four Valley Drive | Vaughan, ON L4K 4T9 | 800.461.3007