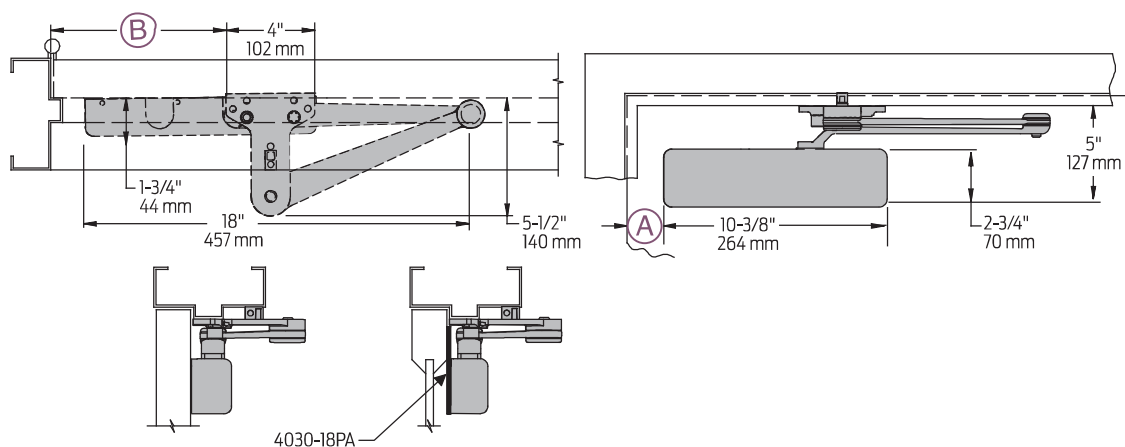


## CUSH mount



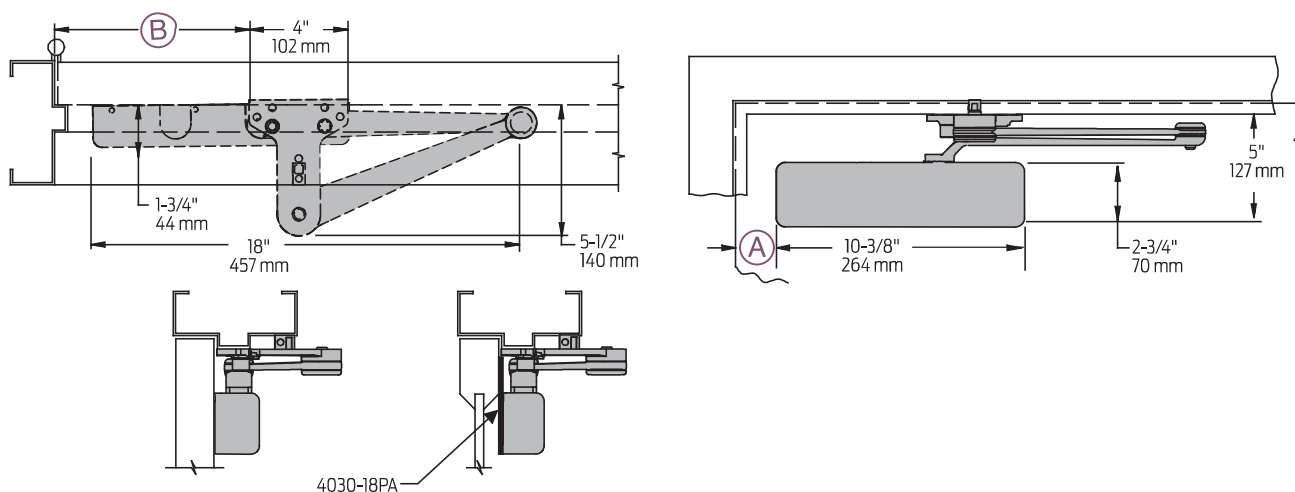
**4030  
Series**

Mounting details

CUSH and Spring CUSH  
Mounting

## Spring CUSH mount

Spring Cush dead stop points are approximately 5° greater than templated stop point.



<b>Clearance</b>	For CUSH or SPRING CUSH shoe is 5-1/2" (140 mm) from door face		
<b>Head Frame</b>	Flush or rabbeted requires CUSH FLUSH PANEL ADAPTER, 4030-419		
<b>CUSH or Spring CUSH ARM</b>	Requires SHOE SUPPORT, 4030-30 for fifth screw anchorage where reveal is less than 3-1/16" (78 mm)		
<b>Maximum opening</b>	CUSH and SPRING CUSH arms can be templated for maximum opening/hold-open point at:		
	85°: A = 3-5/8 (92 mm) B = 9-3/4" (248 mm)	90°: A = 3" (76 mm) B = 9-1/8" (232 mm)	100°*: A = 1-7/8" (48 mm) B = 8" (203 mm)

\*100° mounting will not work with swing clear hinges.

Note:

• 4031 closers ordered with CUSH or SPRING CUSH arms include 4030-201 FIFTH HOLE SPACER to support the shoe